

# MEASURING AND TESTING FACILITIES



BUILDING PHYSICS TESTING	3
MEASURING AND TESTING FACILITIES – AN OVERVIEW	4
ACOUSTICS	8
BUILDING CHEMISTRY, BUILDING BIOLOGY, HYGIENE	41
ENERGY SYSTEMS	59
HYGROTHERMICS	67
INDOOR CLIMATE	102
HEAT TECHNOLOGY, LIGHTING TECHNOLOGY	108
MEASUREMENTS IN LABORATORIES	118
MEASUREMENT OBJECTS	123
STANDARDS	130

# BUILDING PHYSICS TESTING

Fraunhofer IBP is focused on research, development and testing in all fields of building physics. Based on the competence of more than 350 scientists, engineers and technicians numerous outstanding testing resources and measuring instruments are available. Knowledge, experience and creativity can be offered as the keys to innovative products and sustainable quality of buildings. Tailored laboratories and software tools are available in the following departments:




- » **ACOUSTICS**
- » **BUILDING CHEMISTRY,**
- » **BUILDING BIOLOGY, HYGIENE**
- » **ENERGY SYSTEMS**
- » **HEAT TECHNOLOGY,**
- » **LIGHTING TECHNOLOGY**
- » **HYGROTHERMICS**
- » **INDOOR CLIMATE**
- » **LIFE CYCLE ENGINEERING**

We carry out complex building physics studies at our efficient and well-equipped laboratories and test centers and at our outdoor testing site in Holzkirchen, which to the best of our knowledge is the largest facility of its kind. Modern laboratory measuring techniques and computational methods help researchers develop and optimize building products for practical applications. We also carry out experiments in environmental test chambers, simulation facilities and existing buildings to assess components and overall systems for new buildings and renovation projects based on the principles of building physics.

Fraunhofer IBP has been approved by the German building inspection authorities as a testing, monitoring and certification center for building materials and building techniques in Germany and the rest of Europe. Four of the institute's test laboratories have been granted flexible accreditation by the German accreditation body Deutsche Akkreditierungsstelle GmbH (DAkkS) in accordance with DIN EN ISO/IEC 17025. This entitles them to develop new test methods and to modify existing methods.

## How to use this digest

The easiest way to find the right laboratory or facility is to use the keyword register, which is organized in three different ways:

-  **Measurements in laboratories** (type of measurement or quantity to be measured)
-  **Measurement objects** (or part of a building etc. to be measured)
-  **Standards** (DIN, EN, ISO, VDI, etc.)

For technical reasons, the departments are listed following the given alphabetical order of the German department names.

# MEASURING AND TESTING FACILITIES – AN OVERVIEW

## ACOUSTICS

Acoustic camera by using a microphone array	34
Dynamic stiffness	33
Elastic modulus, mechanical loss factor	36
Flanking sound transmission of cavity and raised floors	15
Flanking sound transmission of wall constructions	27
Flanking sound transmission via suspended ceiling	22
Flanking sound transmission via ventilation ducts and shafts	26
Impact sound and impact sound insulation of floors and floor coverings	24
Impact sound insulation of floor coverings	18
Insertion loss at high temperatures	40
Insertion loss, pressure loss, flow noise of silencers and mufflers	32
Noise of water installations	21
Noise of water installations on light walls	19
Noise of water taps and supply valves	20
Rain noise of roof constructions	23
Sound absorption in a reverberation room	9
Sound absorption in an impedance tube	10
Sound impact, sound quality	38
Sound insulation in a door test laboratory	13
Sound insulation in a façade test laboratory	11
Sound insulation in a wall test laboratory	14
Sound insulation in a wall test laboratory	16
Sound insulation in a window test laboratory	12
Sound insulation of floors and roofs	25
Sound insulation of room-high elements	17
Sound power in a reverberation room	29
Sound power in a semi-anechoic chamber	28
Sound power in a wind tunnel	30
Sound power in an anechoic chamber	31
Sound pressure level in a semi-anechoic chamber	37
Sound propagation in a semi-anechoic chamber	39
Vibration analysis by laser scanning vibrometry	35

## **BUILDING CHEMISTRY, BUILDING BIOLOGY, HYGIENE**

Compressive strength	47
Determination of odor emissions from construction materials and odor evaluation of indoor air	51
Determination of substance release from irrigated construction materials	52
E-Modulus	48
Efficacy of biocidal equipped coatings against algae or fungi	42
Environmental impact of building products	53
Evaluation of microbial growth development on weathered surfaces	54
Flexural strength	46
Indoor air hygiene	45
Indoor air quality	50
Photo-catalytic efficacy of coatings against microorganisms	44
Powder x-ray diffraction	57
Product-specific isopleth ranges	43
Thermal analysis	55
Thermo-mechanical analysis of components	56
VOC emissions from construction products	49
X-ray fluorescence analysis	58

## **ENERGY SYSTEMS**

Attic floor test facility	66
Calorimetric façade and roof test facility	63
Energetic twin rooms	61
Fourier spectrometer	65
Test facility for energetic and indoor environment investigations (VERU)	60
Twin houses	62
UV/VIS/NIR spectrometer	64

## **HYGROTHERMICS**

Accelerated test to assess the microbial growth resistance of exterior finishes	100
Air-conditioned test hall	97
Air permeability by test facility for impermeability	69
Artificial ageing by combined exposure to radiation, humidity and temperature	87

Calculation of thermal parameters by computer-aided thermal analysis of building components	77
Capillary activity of interior insulation materials	95
Climate simulation in climate chambers and climate cabinets	75
Climate simulation in the big climate simulator	73
Climate simulation in the three-chamber climate simulator	74
Determination of dew water on the surface	99
Drying curve, drying out	92
Durability with driving rain impact	98
Emission coefficient	81
Flexible test facility for flat and pitched roof	101
Heat dissipation of floors	78
Infrared (IR) laboratory	88
Moisture distribution, NMR	94
Moisture storage, sorption	91
Porosity, true density	93
Resistance to wind load by test facility for impermeability	71
Solar Heat Gain Coefficient (SHGC) by calorimeter method	79
Solar simulator for large building components	84
Spectrophotometer	83
Spectroradiometer	86
Tensile strength, e-modulus	96
Test facility for determination of $U_g$ especially for existing glazings	85
Test facility for solar reflectance index (SRI)	82
Testing machine for mechanical material and component characteristics	80
Thermal conductivity by the guarded hot plate apparatus	68
Thermal conductivity of concentric pipe insulation	76
Thermal resistance and heat transmission coefficient in the Hot Box	72
Water absorption	90
Water tightness against driving rain by test facility for impermeability	70
Water vapor transmission properties	89

## INDOOR CLIMATE

Climate-measuring system DressMAN	103
Indoor climate monitoring and control in four historic rooms	107
Infrared thermography	106
Measurement device for indoor environmental comfort components	104
Particle Image Velocimetry (PIV)	105

## HEAT TECHNOLOGY, LIGHTING TECHNOLOGY

Artificial sky for daylighting evaluation of building models	112
Artificial sun for daylighting evaluation of building models	111
Artificial window for a detailed analysis of daylight conditions	113
Eye tracking glasses for an analysis of visual behavior	116
"In-situ" measurement of photometric characteristics of street pavement	109
Light laboratories for experimental studies on the physiological and psychological effects of light	114
Light transmission and reflection of façades	110
Luminance measuring camera for a spatially resolved analysis of luminance distributions	117
Virtual window for windowless interiors	115

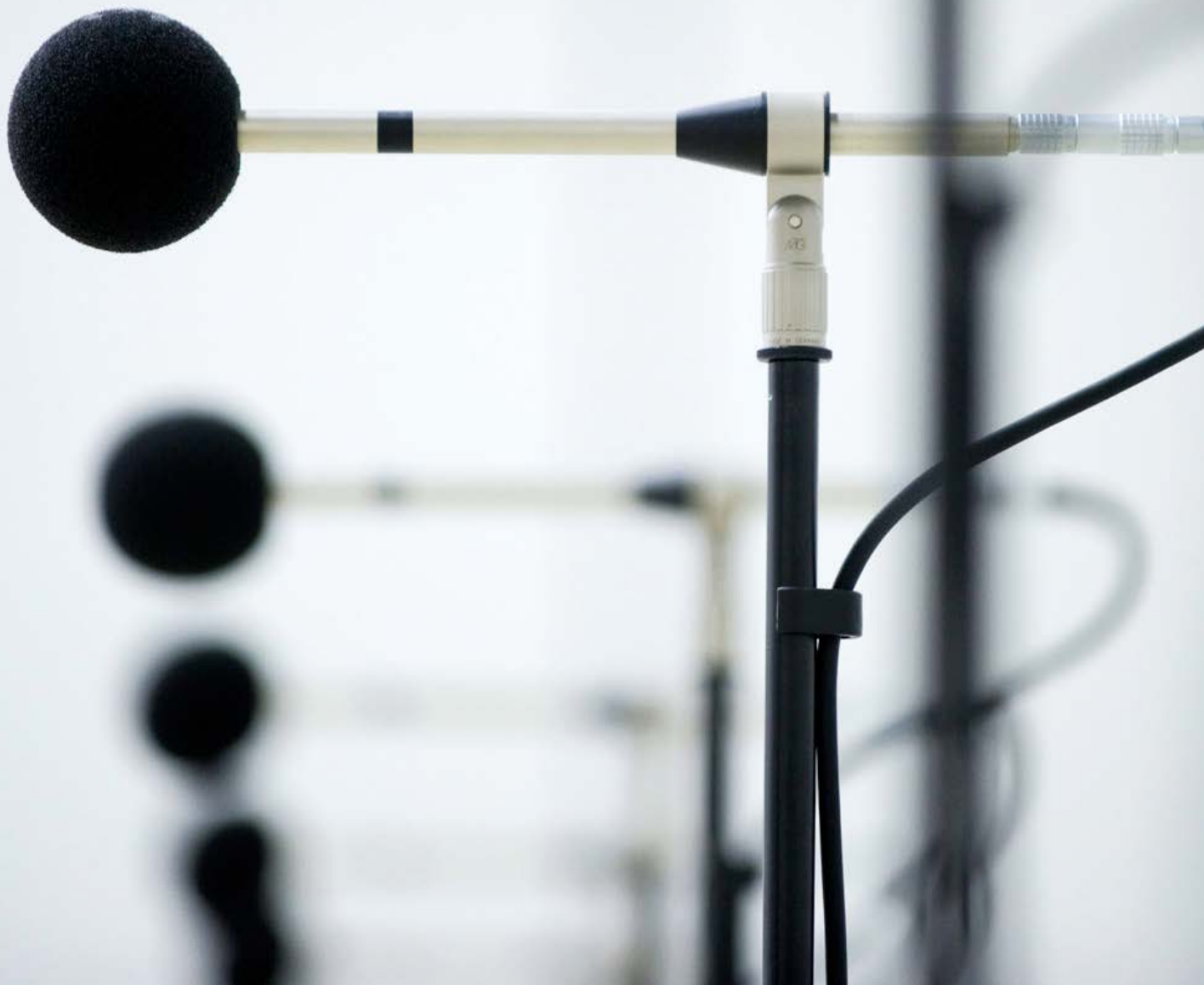


MEASUREMENT AND TEST RANGE

# ACOUSTICS

## Contact

Head of Department Prof. Dr. Philip Leistner | Phone +49 711 970-3346 | [philip.leistner@ibp.fraunhofer.de](mailto:philip.leistner@ibp.fraunhofer.de)





# SOUND ABSORPTION IN A REVERBERATION ROOM



<b>Measurement</b>	Sound absorption coefficient (random sound incidence)
<b>Standard</b>	DIN EN ISO 354
<b>Measurement object</b>	Sound absorbers, suspended ceilings, wall linings, office screens, furniture, seats, panels, textiles, fabrics, noise barriers

## TECHNICAL DATA

<b>Floor area</b>	60 m <sup>2</sup>
<b>Room volume</b>	392 m <sup>3</sup>
<b>Entrance door (H × W)</b>	2.40 × 2.19 m

## SPECIAL FEATURES

<b>Connection to a semi-anechoic room</b>	Measurement of sound insulation and sound absorption of elements between reverberation and anechoic room
<b>Size of the connecting door (measuring surface)</b>	3.80 × 2.35 m

## MORE INFORMATION

- Area of the test object between 12 m<sup>2</sup> and max. 18 m<sup>2</sup>, aspect ratio between 0.7 and 1
- Low vibration doors with high sound reduction
- Suppressed excitation of structure-borne sound of the walls due to a special basement

# SOUND ABSORPTION IN AN IMPEDANCE TUBE



<b>Measurement</b>	Sound absorption coefficient (normal sound incidence)
<b>Standard</b>	DIN EN ISO 10534
<b>Measurement object</b>	Sound absorbers, suspended ceilings, wall linings, panels, fabrics, textiles, granular materials, active material systems

## TECHNICAL DATA

<b>Size of test samples</b>	198 × 198 mm and diameter 100 mm
<b>Thickness of test samples</b>	max. 250 mm (including rear wall distance)
<b>Further tubes and sizes</b>	248 × 248 mm and diameter 30 mm

## SPECIAL FEATURES

<b>Horizontal and vertical installation</b>	Sound absorption measurement of granular materials in lying position
<b>Anechoic termination (measuring surface)</b>	248 × 248 mm

## MORE INFORMATION

- Measurement of acoustic impedance, reflection factor and sound absorption coefficient
- Measurement with a static pressure difference between front and back side
- Different frequency resolutions (extended frequency range by using microphone array)

# SOUND INSULATION IN A FAÇADE TEST LABORATORY



<b>Measurement</b>	Sound insulation and flanking sound transmission
<b>Standards</b>	DIN EN ISO 10848, DIN EN ISO 140-5
<b>Measurement object</b>	Façade elements and prototypes including installations, noise barriers (gabions, etc.), exterior building elements

## TECHNICAL DATA

<b>Floor area (2 rooms)</b>	18.4 m <sup>2</sup> and 2.4 m <sup>2</sup>
<b>Room volume (2 rooms)</b>	71 m <sup>3</sup> and 87 m <sup>3</sup>
<b>Doors (H × W)</b>	1.99 × 0.86 m and 2.02 × 0.95 m
<b>Outward opening (H × W)</b>	10.30 × 3.52 m

## SPECIAL FEATURES

<b>Max. sound reduction (related to the size of test sample)</b>	$R'_{\max,w} = 71$ dB
<b>Vibrational isolation of the test rooms</b>	Supressed external influences

## MORE INFORMATION

- Delivery and direct installation of large test samples via truck-mounted crane
- Rolling gate to close the test opening (weather protection)

# SOUND INSULATION IN A WINDOW TEST LABORATORY



<b>Measurement</b>	Sound insulation
<b>Standard</b>	DIN EN ISO 10140
<b>Measurement object</b>	Windows, glazings, shutters, ventilation elements, panels, joint sealings, small-sized elements

## TECHNICAL DATA

<b>Floor area (2 rooms)</b>	22 m <sup>2</sup> and 18 m <sup>2</sup>
<b>Room volume (2 rooms)</b>	67 m <sup>3</sup> and 57 m <sup>3</sup>
<b>Entrance doors (H × W)</b>	2.0 × 0.85 m and 2.04 × 1.90 m
<b>Size of test samples (H × W)</b>	1.23 × 1.48 m or 1.35 × 1.54 m

## SPECIAL FEATURE

<b>Max. sound reduction (related to the size of test sample)</b>	$R'_{\max,w} = 72$ dB
--	-----------------------

## MORE INFORMATION

- Installation of elements in the test opening by using butt joint or stop bar.
- Elements with smaller size will be framed by a multi-layer panel construction with high sound insulation.
- Heavy elements can be sited by a crane.

# SOUND INSULATION IN A DOOR TEST LABORATORY



<b>Measurement</b>	Sound insulation
<b>Standard</b>	DIN EN ISO 10140
<b>Measurement object</b>	Doors, door leaves, framed doors, ventilation elements, panels, joint sealings, elements

## TECHNICAL DATA

<b>Floor area (2 rooms)</b>	20 m <sup>2</sup> and 17.7 m <sup>2</sup>
<b>Room volume (2 rooms)</b>	62 m <sup>3</sup> and 54 m <sup>3</sup>
<b>Entrance doors (H × W)</b>	2.04 × 1.92 m and 2.02 × 0.87 m
<b>Size of test samples (H × W)</b>	1.985 × 0.985 m (butt joint)

## SPECIAL FEATURE

<b>Max. sound reduction (related to the size of test sample)</b>	$R'_{\max,w} = 61$ dB
--	-----------------------

## MORE INFORMATION

- Elements with smaller size will be framed by a multi-layer panel construction with high sound insulation.
- Larger elements can be tested in other facilities (see pages 11, 14, 16).

# SOUND INSULATION IN A WALL TEST LABORATORY



<b>Measurement</b>	Sound insulation
<b>Standard</b>	DIN EN ISO 10140
<b>Measurement object</b>	Separating walls with high sound insulation, massive and lightweight wall constructions, walls with additional linings, cinema walls, façades, roofs

## TECHNICAL DATA

<b>Floor area (2 rooms)</b>	21 m <sup>2</sup> and 24 m <sup>2</sup>
<b>Room volume (2 rooms)</b>	66 m <sup>3</sup> and 76 m <sup>3</sup>
<b>Entrance doors (H × W)</b>	1.990 × 0.835 m and 2.02 × 1.95 m
<b>Size of test samples (H × W)</b>	3.11 × 4.25 m and 2.95 × 4.25 m

## SPECIAL FEATURE

<b>Max. sound reduction (related to the size of test sample)</b>	$R'_{\max,w} = 89 \text{ dB}$
--	-------------------------------

## MORE INFORMATION

- Wall constructions with high sound insulation at low frequencies, for example separating walls in cinemas, can be tested in this wall test laboratory.
- Height of the walls up to the upper floor or to the lintel below the upper floor

# FLANKING SOUND TRANSMISSION OF CAVITY AND RAISED FLOORS



<b>Measurement</b>	Normalized flanking impact sound level, normalized flanking level difference
<b>Standard</b>	DIN EN ISO 10848-2
<b>Measurement object</b>	Cavity and raised floors, floor systems with air terminals, bulkheads (absorbent, boards)

## TECHNICAL DATA

<b>Floor area (2 rooms)</b>	21 m <sup>2</sup> and 24 m <sup>2</sup>
<b>Room volume (2 rooms)</b>	66 m <sup>3</sup> and 76 m <sup>3</sup>
<b>Entrance doors (H × W)</b>	1.990 × 0.835 m and 2.02 × 1.95 m
<b>Height of the floor system</b>	Variable

## SPECIAL FEATURE

<b>Max. sound reduction (related to the size of test sample)</b>	$R'_{\max,w} = 89$ dB
--	-----------------------

## MORE INFORMATION

- The height of the floor system can be varied but will influence the room volume.
- The separating wall above the floor system is made of a multi-layer panel construction with high sound insulation.



# SOUND INSULATION IN A WALL TEST LABORATORY



<b>Measurement</b>	Sound insulation
<b>Standards</b>	DIN EN ISO 10140, DIN EN 1793-2
<b>Measurement objects</b>	Movable walls, glass walls, folding partitions, noise barriers and screens

## TECHNICAL DATA

<b>Floor area (2 rooms)</b>	16.73 m <sup>2</sup> and 20.89 m <sup>2</sup>
<b>Room volume (2 rooms)</b>	50.82 m <sup>3</sup> and 62.64 m <sup>3</sup>
<b>Entrance doors (H × W)</b>	1.990 × 0.835 m and 2.92 × 4.25 m
<b>Size of test samples (H × W)</b>	2.93 × 3.67 m

## SPECIAL FEATURE

<b>Max. sound reduction (related to the size of test sample)</b>	$R'_{\max,w} = 77$ dB
--	-----------------------

## MORE INFORMATION

Halfen-rails for quick and easy installation of movable wall systems

# SOUND INSULATION OF ROOM-HIGH ELEMENTS



<b>Measurement</b>	Sound insulation
<b>Standard</b>	DIN EN ISO 10140
<b>Measurement object</b>	Façade elements, windows, glazings, panels, gates, doors, large elements

## TECHNICAL DATA

<b>Floor area (2 rooms)</b>	17.7 m <sup>2</sup> and 20 m <sup>2</sup>
<b>Room volume (2 rooms)</b>	62 m <sup>3</sup> and 70 m <sup>3</sup>
<b>Entrance doors (H × W)</b>	2.05 × 1.91 m and 2.00 × 0.83 m
<b>Size of test samples (H × W)</b>	3.18 × 1.23 m (butt joint)

## SPECIAL FEATURE

<b>Max. sound reduction (related to the size of test sample)</b>	$R'_{\max,w} = 72$ dB
--	-----------------------

## MORE INFORMATION

- Elements with smaller size will be framed by a multi-layer panel construction with high sound insulation.
- Larger elements can be tested in other facilities.

# IMPACT SOUND INSULATION OF FLOOR COVERINGS



<b>Measurement</b>	Impact sound insulation
<b>Standard</b>	DIN EN ISO 10140
<b>Measurement object</b>	Floor coverings, floating floors, carpets, parquet floors, laminate, stone floors

## TECHNICAL DATA

<b>Floor area and object size</b>	4.73 × 3.73 m, variable thickness of floor coverings
<b>Room volume (2 rooms)</b>	62 m <sup>3</sup> and 54 m <sup>3</sup>
<b>Entrance doors (H × W)</b>	2.05 × 1.91 m and 2.05 × 1.89 m
<b>Thickness of separating floor</b>	140 mm (reinforced concrete)

## SPECIAL FEATURE

<b>Walking sound (walking noise)</b>	Apart from the impact sound the walking sound in the sending room can also be measured and weighted.
--------------------------------------	--

## MORE INFORMATION

The surface of the separating floor is especially grinded, in order to apply (laying or sticking) thin resilient floor coverings.

# NOISE OF WATER INSTALLATIONS ON LIGHT WALLS



<b>Measurement</b>	Noise of water installations
<b>Standards</b>	DIN EN ISO 10052, DIN 4109, SIA 181, VDI 4100
<b>Measurement object</b>	Lightweight installation walls, front-wall and in-wall installations

## TECHNICAL DATA

<b>Floor area (2 rooms)</b>	20 m <sup>2</sup> and 20 m <sup>2</sup>
<b>Room volume (2 rooms)</b>	70 m <sup>3</sup> and 61 m <sup>3</sup>
<b>Entrance doors (H × W)</b>	2.00 × 0.83 m and 1.99 × 0.84 m
<b>Thickness of separating floor</b>	190 mm (reinforced concrete)

## SPECIAL FEATURE

<b>Controllable water supply (water pressure and flow rate)</b>	In both rooms (stacked bathrooms)
---	-----------------------------------

## MORE INFORMATION

- Lightweight installation walls are separating each of the stacked rooms.
- Test results can be used to prove compliance with requirements according to the German standard DIN 4109 and to the guideline VDI 4100.
- Test results can be used for classification according to the Swiss standard SIA 181 (noise sensitivity levels).

# NOISE OF WATER TAPS AND SUPPLY VALVES



<b>Measurement</b>	Noise of water taps and water supply valves
<b>Standard</b>	DIN EN ISO 3822
<b>Measurement object</b>	Water taps, supply valves, equipment for water installations, fresh water filters, water softening systems

## TECHNICAL DATA

<b>Room volume</b>	55.8 m <sup>3</sup>
<b>Size of test wall</b>	11.7 m <sup>2</sup>
<b>Length of test pipe</b>	8.1 m
<b>Flow pressure</b>	0.3 MPa or 0.5 MPa

## SPECIAL FEATURE

<b>Min. noise level</b>	L <sub>p</sub> = 5 dB(A)
-------------------------	--------------------------

## MORE INFORMATION

- Flow rate up to 2.0 Liters per second
- Issuing of special certificates, for example “Allgemeine Bauaufsichtliche Prüfzeugnisse (ABP)” as needed in Germany

# NOISE OF WATER INSTALLATIONS



<b>Measurement</b>	Noise of water installations and sanitary equipment
<b>Standards</b>	DIN EN ISO 10052, DIN EN 14366, DIN 4109, SIA 181, VDI 4100
<b>Measurement object</b>	Water installations, waste water systems, shower systems, bath tubs, all types of front-wall installations, pipe insulations, pipe clamps, etc.

## TECHNICAL DATA

<b>Floor areas</b>	5.00 × 3.45 m (installation room) 5.00 × 4.62 m and 5.00 × 3.45 m
<b>Room volumes</b>	70.4 m <sup>3</sup> and 52.6 m <sup>3</sup> (receiving room)
<b>Entrance door (H × W)</b>	2.05 × 2.00 m (installation room)
<b>Thickness of separating floor</b>	190 mm (reinforced concrete)

## SPECIAL FEATURE

<b>Controllable water supply (water pressure and flow rate)</b>	In all rooms (stacked bathrooms)
---	----------------------------------

## MORE INFORMATION

- Massive walls (single layer, 220 kg/m<sup>2</sup> mass per unit area) are separating each of the stacked rooms.
- Test results can be used to prove compliance with requirements according to the German standard DIN 4109 and to the guideline VDI 4100.
- Test results can be used for classification according to the Swiss standard SIA 181 (noise sensitivity levels).

# FLANKING SOUND TRANSMISSION VIA SUSPENDED CEILINGS



<b>Measurement</b>	Normalized flanking level difference
<b>Standard</b>	DIN EN ISO 10848-2
<b>Measurement object</b>	Suspended board ceilings, grid ceilings, metal ceilings, ceilings systems with lights and air terminals, bulkheads (absorbent, boards)

## TECHNICAL DATA

<b>Floor area (2 rooms)</b>	18.76 m <sup>2</sup> and 23.32 m <sup>2</sup>
<b>Room volume (2 rooms)</b>	55.2 m <sup>3</sup> and 72.7 m <sup>3</sup>
<b>Entrance doors (H × W)</b>	1.900 × 0.805 m and 1.910 × 1.875 m
<b>Height of the ceiling plenum</b>	Variable between 400 mm and 1150 mm

## SPECIAL FEATURE

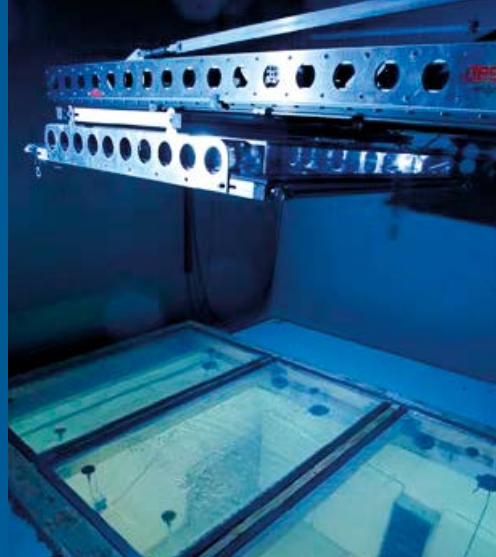
<b>Max. sound reduction (related to the size of test sample)</b>	$R'_{\max,w} = 70$ dB
--	-----------------------

## MORE INFORMATION

- The concrete floor above the suspended ceiling is adjustable in height, so the plenum height can be changed without changing the suspended ceiling.
- Mounting grids available
- The separating wall below the suspended ceiling is made of a multi-layer panel construction with high sound insulation.



# RAIN NOISE OF ROOF CONSTRUCTIONS



<b>Measurement</b>	Rain noise level
<b>Standard</b>	DIN EN ISO 140
<b>Measurement object</b>	Roofs, roof constructions and elements, skylights, roof and dome lights, membrane roofs, systems for rain noise reduction

## TECHNICAL DATA

<b>Room volume (2 rooms)</b>	100 m <sup>3</sup> and 50 m <sup>3</sup>
<b>Entrance doors (H × W)</b>	2.05 × 1.91 m
<b>Size of test samples (standardized)</b>	3.71 × 2.71 m (roofs), 1.5 × 1.25 m (skylights)
<b>Slope angle</b>	5° (roofs), 30° (skylights)

## SPECIAL FEATURES

- The installation frame can be adapted to arbitrarily shaped test samples.
- Controllable rain intensity and impact velocity of rain drops

## MORE INFORMATION

Airborne sound insulation of installed test samples can be determined.

# IMPACT SOUND AND IMPACT SOUND INSULATION OF FLOORS AND FLOOR COVERINGS



<b>Measurement</b>	Impact sound and impact sound insulation
<b>Standard</b>	DIN EN ISO 10140
<b>Measurement object</b>	Timber frame and lightweight floor constructions, floating floors and floor coverings, timber joist floors

## TECHNICAL DATA

<b>Floor area and object size</b>	20 m <sup>2</sup>
<b>Room volume (2 rooms)</b>	70.6 m <sup>3</sup> and 50.0 m <sup>3</sup>
<b>Entrance doors (H × W)</b>	2.18 × 0.83 m and 2.02 × 1.95 m
<b>Size of test samples</b>	20 m <sup>2</sup> , variable height

## SPECIAL FEATURE

<b>Impact sound insulation and walking sound</b>	Apart from the impact sound in the receiving room the noise generated in the sending room (walking sound) can be measured and weighted.
--	---

## MORE INFORMATION

- Circumferential bracket to support the separating floor
- Timber joist floor of type 1 according to DIN EN ISO 10140 available

# SOUND INSULATION OF FLOORS AND ROOFS



<b>Measurement</b>	Sound insulation
<b>Standard</b>	DIN EN ISO 10140
<b>Measurement object</b>	Timber frame and lightweight floor constructions, floor coverings, roofs and roof constructions

## TECHNICAL DATA

<b>Floor area (both rooms)</b>	20 m <sup>2</sup>
<b>Room volume (2 rooms)</b>	70.6 m <sup>3</sup> and 50.0 m <sup>3</sup>
<b>Entrance doors (H × W)</b>	2.18 × 0.83 m and 2.02 × 1.95 m
<b>Size of test samples</b>	20 m <sup>2</sup> , variable height

## SPECIAL FEATURE

<b>Max. sound reduction (related to the size of test sample)</b>	R' <sub>max,w</sub> = 69 dB
--	-----------------------------

## MORE INFORMATION

- Circumferential panel for the bearing of roof or ceiling units
- Timber joist floor type 1 according to DIN EN ISO 10140 available

# FLANKING SOUND TRANSMISSION VIA VENTILATION DUCTS AND SHAFTS



<b>Measurement</b>	Normalized flanking level difference (German "Schachtpegeldifferenz")
<b>Standard</b>	DIN 52210
<b>Measurement object</b>	Ventilation ducts and shafts, exhaust systems, components of ventilation systems

## TECHNICAL DATA

<b>Floor area (both rooms)</b>	20 m <sup>2</sup>
<b>Room volume (2 rooms)</b>	70.6 m <sup>3</sup> and 50.0 m <sup>3</sup>
<b>Entrance doors (H × W)</b>	2.18 × 0.83 m and 2.02 × 1.95 m
<b>Size of mounting place</b>	Variable cross-section of ducts and shafts

## SPECIAL FEATURE

<b>Max. sound reduction (related to the size of test sample)</b>	Dw ≥ 55 dB
--	------------

## MORE INFORMATION

- Circumferential bracket to support the separating floor
- Variable installation of duct and shaft systems

# FLANKING SOUND TRANSMISSION OF WALL CONSTRUCTIONS



<b>Measurement</b>	Normalized flanking level difference, vibration transmission (index) of wall junctions
<b>Standards</b>	DIN EN ISO 10848-2, DIN EN ISO 10848-3
<b>Measurement object</b>	Separating walls (massive, masonry, lightweight), additional linings, internal and external thermal insulation composite systems, wall junctions

## TECHNICAL DATA

<b>Floor area (4 rooms)</b>	89.5 m <sup>2</sup> (total)
<b>Room volume (4 rooms)</b>	276.6 m <sup>3</sup> (total)
<b>Entrance doors (H × W)</b>	2.00 × 0.83 m and 2.06 × 1.94 m

## SPECIAL FEATURE

<b>Max. sound reduction (related to the size of test sample)</b>	R <sub>w,max</sub> = 81 to 83 dB (depending on transmission path)
--	---

## MORE INFORMATION

- The test facility with concrete walls can be separated in 4 adjacent rooms, which are divided by isolated joints (horizontal, vertical) in order to minimize the flanking sound transmission.
- Reproduction of standard construction situations
- Reduced flanking transmission
- Typical scenarios in buildings can be investigated, considering all horizontal direct and flanking transmission paths of airborne and structure-borne sound.

# SOUND POWER IN A SEMI-ANECHOIC CHAMBER



<b>Measurement</b>	Sound power (enveloping measurement surface), sound intensity, localization of sound sources
<b>Standards</b>	DIN EN ISO 3745, DIN EN ISO 3744
<b>Measurement object</b>	Machinery and equipment, for example of ventilation and air-conditioning systems, and other noise sources

## TECHNICAL DATA

<b>Free room size (L × W × H)</b>	19.43 × 5.25 × 6.17 m
<b>Room volume</b>	629 m <sup>3</sup>
<b>Entrance door (H × W)</b>	1.90 × 2.37 m

## SPECIAL FEATURES

<b>Connection to a reverberation room</b>	Measurement of sound insulation and sound absorption of elements between reverberation and anechoic room
<b>Size of the connecting door (measuring surface)</b>	3.80 × 2.35 m

## MORE INFORMATION

- Ventilation system (flow rate max. 4000 m<sup>3</sup>/h)
- Vibrational isolation by using “Omega Clamps” to suppress influence due to structure-borne sound
- Lower cut-off frequency 125 Hz (according to standard)

# SOUND POWER IN A REVERBERATION ROOM



<b>Measurement</b>	Sound power
<b>Standard</b>	DIN EN ISO 3741
<b>Measurement object</b>	Machinery and equipment, for example of ventilation and air-conditioning systems, air terminals and other noise sources

## TECHNICAL DATA

<b>Floor area</b>	60 m <sup>2</sup>
<b>Room volume</b>	392 m <sup>3</sup>
<b>Entrance door (H × W)</b>	1.9 × 2.4 m

## SPECIAL FEATURES

<b>Connection to a semi-anechoic room</b>	Measurement of sound insulation and sound absorption of elements between reverberation and anechoic room
<b>Size of the connecting door (measuring surface)</b>	3.80 × 2.35 m

## MORE INFORMATION

- Controllable air-condition system for the adjustment of temperature and humidity
- Low vibration doors with high sound reduction
- Suppressed excitation of structure-borne sound of the walls due to a special basement



# SOUND POWER IN A WIND TUNNEL



<b>Measurement</b>	Sound power, wind and flow noise
<b>Standard</b>	DIN EN ISO 7235
<b>Measurement object</b>	Façades, façade elements, fans, other components of HVAC systems (filters, heat exchangers, gratings, throttles, etc.)

## TECHNICAL DATA

<b>Test duct (L × H)</b>	12.0 × 0.5 m
<b>Width of the test duct</b>	500 to 1300 mm (50 mm steps)
<b>Fan</b>	Flow rate $\leq 35 \text{ m}^3/\text{s}$ , pressure difference $\leq 2500 \text{ Pa}$
<b>Max. size of test samples (L × H)</b>	6.000 × 0.498 m

## SPECIAL FEATURE

<b>Type of test facility</b>	Wind tunnel with closed loop ventilation duct
------------------------------	---

## MORE INFORMATION

- Continuously adjustable air flow speed
- Uniform and noiseless air flow
- Sound power measurement in the receiving room out of the air flow
- Stationary measuring system for static and dynamic pressure

# SOUND POWER IN AN ANECHOIC CHAMBER



<b>Measurement</b>	Sound power (enveloping measurement surface), sound intensity, localization of sound sources
<b>Standard</b>	DIN EN ISO 3745
<b>Measurement object</b>	Machinery and equipment, for example of ventilation and air-conditioning systems, and other noise sources

## TECHNICAL DATA

<b>Free room size (L × W × H)</b>	9.3 × 10.4 × 10.3 m
<b>Room volume</b>	1090 m <sup>3</sup>
<b>Entrance door (H × W)</b>	1.89 × 2.34 m

## SPECIAL FEATURE

<b>Removable assembly grating as working area</b>	4.0 × 4.0 m area, 5000 N/m <sup>2</sup> loading capacity
---	--

## MORE INFORMATION

- Room-in-room construction with very low background noise
- Vibrational isolation by using separate basement and steel springs
- Lower cut-off frequency 80 Hz (according to standard)
- Ventilation system

# INSERTION LOSS, PRESSURE LOSS, FLOW NOISE OF SILENCERS AND MUFFLERS



<b>Measurement</b>	Insertion loss, sound power, pressure loss
<b>Standard</b>	DIN EN ISO 7235
<b>Measurement object</b>	Silencers as splitters, ducted silencers, special construction of silencers, ventilation and air-conditioning components, (filters, heat exchangers, etc.)

## TECHNICAL DATA

<b>Test duct (L × H)</b>	12.0 × 0.5 m
<b>Width of the test duct</b>	500 to 1300 mm (50 mm steps)
<b>Fan</b>	Flow rate ≤ 35 m <sup>3</sup> /s, pressure difference ≤ 2500 Pa
<b>Max. size of test samples (L × H)</b>	6.000 × 0.498 m

## SPECIAL FEATURE

<b>Type of test facility</b>	Wind tunnel with closed loop ventilation duct
------------------------------	---

## MORE INFORMATION

- Special sound source (loudspeaker wall, 2800 W) for uniform radiation into the test duct
- Continuously adjustable air flow speed
- Uniform and noiseless air flow
- Sound power measurement in the receiving room out of the air flow
- Stationary measuring system for static and dynamic pressure

# DYNAMIC STIFFNESS



<b>Measurement</b>	Dynamic stiffness
<b>Standard</b>	DIN 29052
<b>Measurement object</b>	All types of elastic and damping layers of floating floors and floor coverings, elastic and damping materials for other applications

## TECHNICAL DATA

<b>Size of test samples</b>	200 × 200 mm
<b>Thickness of test samples</b>	10 to 50 mm
<b>Static load</b>	8 kg
<b>Measuring range</b>	Approx. 5 to 100 MN/m <sup>3</sup>

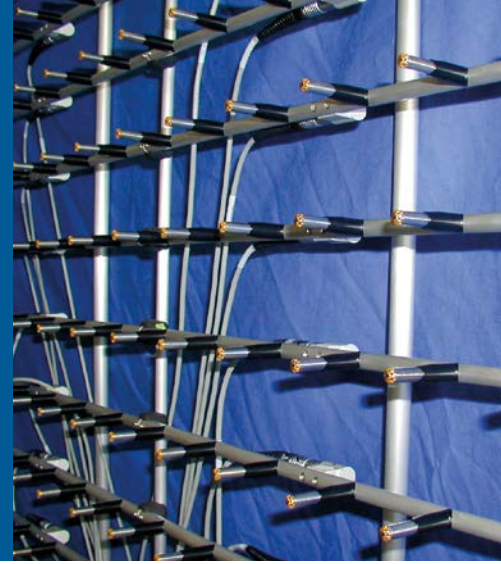
## SPECIAL FEATURE

<b>Range of surface load</b>	0.4 Pa to 4 kPa
------------------------------	-----------------

## MORE INFORMATION

The resonance frequency of the system (test sample and mechanically loading element) is determined by using swept sine excitation at different forces.

# ACOUSTIC CAMERA BY USING A MICROPHONE ARRAY



<b>Measurement</b>	Sound radiation, directional pattern, sound, sound particle velocity, sound intensity, sound power
<b>Measurement object</b>	Machinery, equipment, tools, components, building services, fans, vehicles, etc.

## TECHNICAL DATA

<b>Number of microphones</b>	96 (holography), 56 (beamforming)
<b>Array geometry</b>	Rectangular, circular, logarithmic spiral
<b>Distance between microphones</b>	30, 75, 150 mm (holography)

## SPECIAL FEATURES

<b>Acoustic nearfield holography</b>	Analysis in the nearfield of sound sources, stationary and transient sound
<b>Beamforming</b>	Analysis in the farfield of sound sources, static and moving test objects

## MORE INFORMATION

- Combination with a high-speed camera
- Laboratory and in-situ measurements

# VIBRATION ANALYSIS BY LASER SCANNING VIBROMETRY



<b>Measurements</b>	Vibration velocity and displacement, vibration and modal analysis
<b>Measurement object</b>	Machinery, equipment, installations, tools, components, panels, shells, etc.

## TECHNICAL DATA

<b>Laser</b>	Helium-neon laser ( $\lambda = 633 \text{ nm}$ )
<b>Frequency range</b>	0 to 40 kHz
<b>Measuring range</b>	0.5 $\mu\text{m/s}$ to 2.5 m/s (vibration velocity)

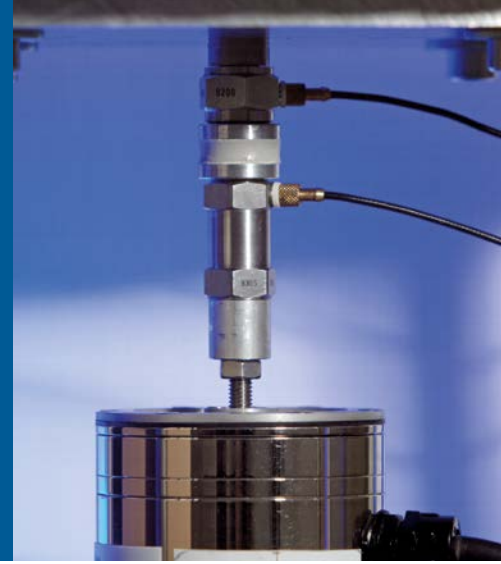
## SPECIAL FEATURES

- Contact-free measurement of vibrating objects and surfaces
- Automatic scanning of a free definable point grid on the surface
- Visualization (graph or film) of vibration modes of the measuring objects

## MORE INFORMATION

- Locating of zones with maximum vibration in case of real or ideal excitation
- Optimization of the vibration characteristics of components
- Combination with acoustic near-field holography for determination of radiation factor
- Data export to other software for refined analysis

# ELASTIC MODULUS, MECHANICAL LOSS FACTOR



<b>Measurement</b>	Elastic (Young's) modulus, mechanical loss factor
<b>Standard</b>	Based on ISO 6721-4
<b>Measurement object</b>	All types of elastomers (plastic and foamed materials), sealing compounds (silicone, acrylic, etc.), elastic adhesives

## TECHNICAL DATA

<b>Size of material samples</b>	Diameter 20 mm (cylindrical slices)
<b>Thickness of material samples</b>	3 to 5 mm
<b>Shape function</b>	The influence of geometry is considered by using a shape function.
<b>Frequency range</b>	50 to approx. 3000 Hz (upper limit depends on the sample)

## SPECIAL FEATURE

<b>Sample preparation</b>	Preparation and hardening of the sample is carried out outside of the test system. Afterwards the sample is installed with adapters on both sides.
---------------------------	--

## MORE INFORMATION

- Excitation by using forced vibrations (swept sine) generated by an electrodynamic shaker
- Detection of input force and resulting displacement with piezoelectric force transducer and accelerometer including the phase difference between force and displacement



# SOUND PRESSURE LEVEL IN A SEMI-ANECHOIC CHAMBER



<b>Measurement</b>	Sound pressure level (averaged values and statistical analysis), directional pattern of sound sources
<b>Measurement object</b>	Machinery and equipment, ventilation and air-conditioning systems, especially large measuring objects

## TECHNICAL DATA

<b>Free room size (L × W × H)</b>	19.43 × 5.25 × 6.17 m
<b>Room volume</b>	629 m <sup>3</sup>
<b>Entrance door (H × W)</b>	1.90 × 2.37 m

## SPECIAL FEATURES

<b>Connection to a reverberation room</b>	Measurement of sound insulation and sound absorption of elements between reverberation and anechoic room
<b>Size of the connecting door (measuring surface)</b>	3.8 × 2.35 m

## MORE INFORMATION

- Vibrational isolation by using “Omega Clamps” to suppress influence due to structure-borne sound
- Lower cut-off frequency 125 Hz (according to standard)
- Ventilation system (flow rate max. 4000 m<sup>3</sup>/h)



# SOUND IMPACT, SOUND QUALITY



<b>Measurement</b>	Sound impact, sound quality (e.g. loudness, annoyance, performance)
<b>Standards</b>	ISO/TS 15666, ISO 16832, etc.
<b>Methods</b>	Interviews, perception and performance tests (users, affected people, test persons)

## TECHNICAL DATA

<b>Floor area</b>	44 m <sup>2</sup>
<b>Room volume</b>	132 m <sup>3</sup>

## SPECIAL FEATURES

<b>Acoustics</b>	<p>Room acoustics: variable reverberation time by using removable absorptive ceiling and linings</p> <p>Electroacoustic system: 64 channel sound field system (IOSONO) comprising 412 loudspeakers for realistic presentation of acoustic scenarios, laboratory and software for production of sound files, studio for 4 test persons</p>
<b>Light</b>	<p>Daylight: light wall for sunlight simulation in front of the façade (luminance up to 10 000 cd/m<sup>2</sup>, colour temperature between 3000 and 6500 K)</p> <p>Inside: highly variable artificial lighting with DALI bus system, e.g. for adaptive light management</p>
<b>Ventilation</b>	<p>Ventilation rate 300 to 1800 m<sup>3</sup>/h</p> <p>Room temperature between +18 and +30 °C</p>

## MORE INFORMATION

- Identification of sound impact and optimization of sound quality of products or components in buildings, e.g., building service systems and installations
- Investigation of use-related room scenarios, e.g. offices, meeting rooms and classrooms, with test persons in order to quantify room influences on well-being and performance

# SOUND PROPAGATION IN A SEMI-ANECHOIC CHAMBER



<b>Measurement</b>	Sound propagation, sound shielding and attenuation
<b>Measurement object</b>	Scale models of constructions, buildings and landscapes, for example sound screens and noise barriers

## TECHNICAL DATA

<b>Free room size (inside liner) (L × W × H)</b>	19.43 × 5.25 × 6.17 m
<b>Room volume</b>	629 m <sup>3</sup>
<b>Entrance door (H × W)</b>	1.90 × 2.37 m

## SPECIAL FEATURES

<b>Connection to a reverberation room</b>	Measurement of sound insulation and sound absorption of elements between reverberation and anechoic room
<b>Size of the connecting door (measuring surface)</b>	3.80 × 2.35 m

## MORE INFORMATION

- Scale model measurements (on a scale 1: 40), including rooms
- Determination of sound propagation in scale model landscapes and urban scenarios, for example emission and shielding of buildings, sound screens and noise barriers
- Ventilation system (flow rate max. 4000 m<sup>3</sup>/h)
- Vibrational isolation by using “Omega Clamps” to suppress influence due to structure-borne sound
- Lower cut-off frequency 125 Hz (according to standard)

# INSERTION LOSS AT HIGH TEMPERATURES



<b>Measurement</b>	Insertion loss, sound power
<b>Standard</b>	DIN EN ISO 7235
<b>Measurement object</b>	Exhaust gas silencers, components of exhaust gas systems, silencers in duct systems with high temperature

## TECHNICAL DATA

<b>Test duct</b>	2 m length, connection 200 mm diameter
<b>Fan</b>	Flow rate $\leq 450 \text{ m}^3/\text{h}$
<b>Heater battery</b>	Power 2 kW, max. temperature in the duct $+130 \text{ }^\circ\text{C}$
<b>Size of test samples</b>	Max. 1.8 m length, max. 400 mm diameter

## SPECIAL FEATURES

<b>Type of test facility</b>	Closed loop duct system
<b>Measuring duct</b>	Sound source, anechoic terminations

## MORE INFORMATION

- Continuously adjustable air flow speed
- Uniform and noiseless air flow

MEASUREMENT AND TEST RANGE

# BUILDING CHEMISTRY, BUILDING BIOLOGY, HYGIENE

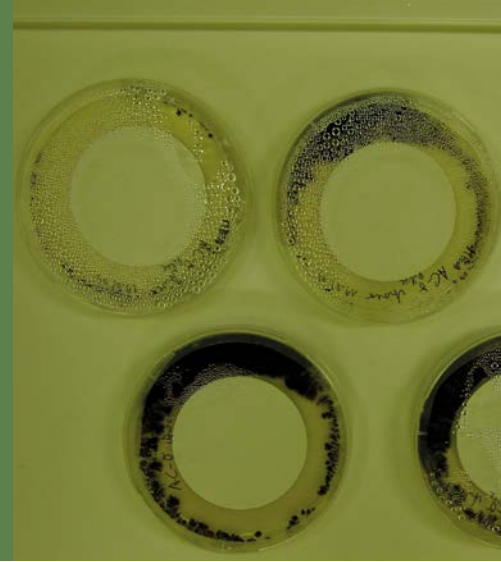
Contact

Head of Department Dr. Florian Mayer | Phone +49 8024 643-238 | [florian.mayer@ibp.fraunhofer.de](mailto:florian.mayer@ibp.fraunhofer.de)





# EFFICACY OF BIOCIDAL EQUIPPED COATINGS AGAINST ALGAE OR FUNGI



<b>Measurement</b>	Testing the efficacy of biocidal equipped coatings against algae or fungi
<b>Standards</b>	DIN EN 15458:2007-10 (D), DIN EN 15457:2007-10 (D)
<b>Measurement object</b>	Special designed specimen (diameter 5 cm) with coating (e.g., plaster, paints, varnish), not biocidal equipped reference probe necessary

## TECHNICAL DATA

<b>Area of test specimen</b>	Approx. 20 cm <sup>2</sup>
<b>Thickness of test specimen</b>	Varies according to type of coating from 0.5 to approx. 20 mm
<b>Processing</b>	According to given requirements
<b>Number of specimen</b>	For each tested variant 15 specimen
<b>Test duration</b>	4 to 8 weeks

## SPECIAL FEATURES

<b>Test strains</b>	According to relevant standards, on request also further test strains from own collection
<b>Conditioning</b>	On request also special conditioning possible: accelerated carbonation, watering, etc.

## MORE INFORMATION

Further tests in context:

- testing on photo-catalytic efficacy
- analysis of surface growth
- testing of biocidal activity on the surface

# PRODUCT-SPECIFIC ISOPLETH RANGES



<b>Measurement</b>	Acquisition of the natural resistance of a product against infestation by microorganisms (mould and mildew) through assessment of the product specific isopleth ranges
<b>Standard</b>	Own testing method, published
<b>Measurement object</b>	Special designed specimen (dimension 5 × 5 cm, for loose material filling into special wire frames), 36 specimen shall be provided

## TECHNICAL DATA

<b>Area of test specimen</b>	25 cm <sup>2</sup>
<b>Thickness of test specimen</b>	Typically 1 to 3 cm
<b>Processing</b>	According to given requirements
<b>Test climate</b>	For 100 days, 12 different combinations of temperature and relative humidity (adjustable ranges from +8 to +40 °C and 50 to 98 % r.h.)
<b>Test duration</b>	14 weeks

## SPECIAL FEATURES

<b>Test strains</b>	According to material/application "typical" test strains from own collection, apart from fungi also bacteria or algae (light source available) possible
<b>Conditioning</b>	On request also special conditioning possible: accelerated carbonation, watering, etc.

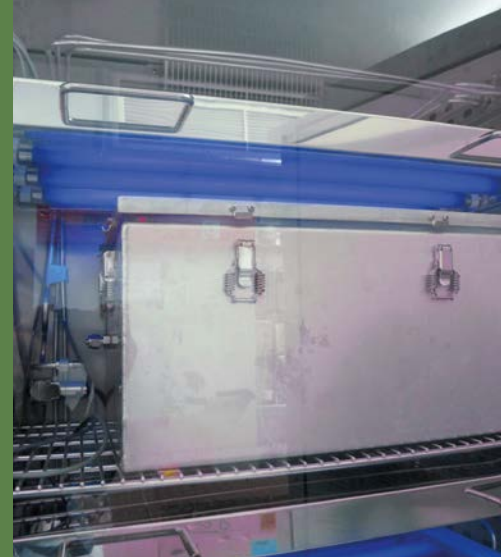
## MORE INFORMATION

Result presentation as so called "isopleth traffic light"

Further tests in context:

- testing on photo-catalytic efficacy
- testing of biocidal activity on the surface

# PHOTO-CATALYTIC EFFICACY OF COATINGS AGAINST MICROORGANISMS



<b>Measurement</b>	Testing of the photo-catalytic efficacy of a correspondingly equipped coating formulation
<b>Standard</b>	Own testing method, published
<b>Measurement object</b>	Special designed specimen (e.g., tiles, dimension from 5 × 5 cm <sup>2</sup> to 10 × 10 cm <sup>2</sup> ) with coating (e.g., plaster, paint, varnish); non photo-catalytically equipped reference probe necessary

## TECHNICAL DATA

<b>Area of test specimen</b>	25 cm <sup>2</sup> or 100 cm <sup>2</sup>
<b>Thickness of test specimen</b>	Varies according to type of coating from 4 to approx. 20 mm
<b>Processing</b>	According to given requirements
<b>Number of specimen</b>	For each tested variant 15 specimen
<b>Test duration</b>	2 to 6 weeks

## SPECIAL FEATURES

<b>Test strains</b>	According to application "typical" test strains from own collection; for bacteria, fungi or algae in each case separate testing
<b>Conditioning</b>	On request also special conditioning possible: accelerated carbonation, watering, etc.

## MORE INFORMATION

Further tests in context:

- testing on efficacy of biocidal equipped coatings against algae or fungi
- analysis of surface growth
- testing of biocidal activity on the surface

# INDOOR AIR HYGIENE



<b>Measurement</b>	Survey of airborne germs of indoor air by filtration in comparison to outdoor air
<b>Standards</b>	DIN ISO 16000-16, DIN ISO 16000-17, DIN ISO 16000-18, DIN ISO 16000-19, VDI 4300-10
<b>Measurement object</b>	Indoor air in comparison to outdoor air

## TECHNICAL DATA

<b>Test volume</b>	For short-term measurement typically 50 L for each filter
<b>Test duration</b>	Nine-fold measurement, approx. 30 min for each reading point
<b>Processing</b>	Preparation of the measured rooms according to VDI 4300-10
<b>Evaluation</b>	According to UBA guide, counting of germs growing after 3, 7 and 10 days

## SPECIAL FEATURES

<b>Culture media</b>	Use of microbiological culture media for mesophilic and xerotolerant fungi and airborne bacteria as a matter of routine
<b>Flexibility</b>	Use of gelatine filters allows also the application of a dilution series, apart from direct cultivation – depending on the expected germ load of the investigated air

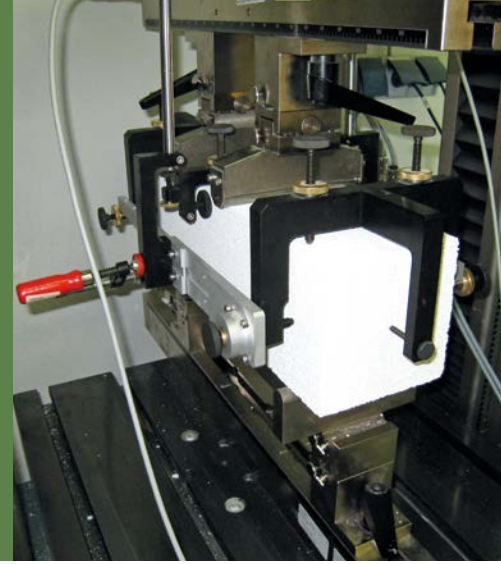
## MORE INFORMATION

Further tests in context:

- orienting rapid test of AQA company
- long term measurement of air germs, impaction or filtration
- microbial analysis of materials (e.g. floor insulation)



# FLEXURAL STRENGTH



<b>Measurement</b>	Flexural strength in N/mm <sup>2</sup>
<b>Standards</b>	DIN 12390-5 (concrete), DIN EN 196-1 (mortar), DIN EN 1351 (auto-claved aerated concrete, AAC)
<b>Measurement object</b>	Concrete, mortar, autoclaved aerated concrete, fibre reinforced concrete

## SPECIAL FEATURE

<b>Test specimen dimensions</b>	Concrete prisms 150 × 700 × 150 mm Mortar prisms 40 × 160 × 40 mm AAC prisms 400 × 100 × 100 mm
---------------------------------	---

## MORE INFORMATION

Measurement of 3- or 4-point flexural strength possible

# COMPRESSIVE STRENGTH



<b>Measurement</b>	Cube compressive strength in N/mm <sup>2</sup>
<b>Standards</b>	DIN EN 13791 (concrete), DIN EN 196-1 (mortar), DIN EN 679 (autoclaved aerated concrete), DIN EN 772-1 (autoclaved aerated concrete), DIN EN 771-4 (autoclaved aerated concrete)
<b>Measurement object</b>	Concrete, mortar, autoclaved aerated concrete, fibre reinforced concrete

## SPECIAL FEATURE

<b>Test specimen dimensions</b>	Concrete cube 100 × 100 × 100 mm Mortar cube 40 × 40 × 40 mm AAC cube 100 × 100 × 100 mm
---------------------------------	--

## MORE INFORMATION

Loading capacity max. 100 kN

# E-MODULUS



<b>Measurement</b>	Static and dynamic modulus of elasticity in N/mm <sup>2</sup>
<b>Standards</b>	DIN 1048-5 (concrete), DIN EN 1352 (autoclaved aerated concrete)
<b>Measurement object</b>	Concrete, autoclaved aerated concrete, fibre reinforced concrete

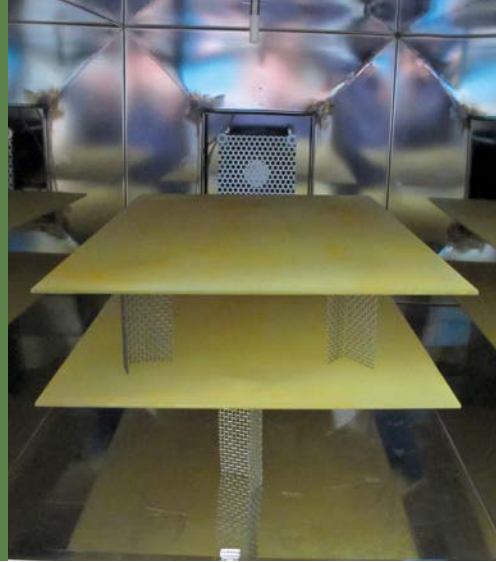
## SPECIAL FEATURE

<b>Test specimen dimensions</b>	Concrete prisms 100 × 100 × 300 mm AAC prisms 100 × 100 × 300 mm
---------------------------------	---

## MORE INFORMATION

- Measurements of Poisson ratio
- Possibility to measure under different moisture conditions

# VOC EMISSIONS FROM CONSTRUCTION PRODUCTS



<b>Measurement</b>	Volatile organic compounds (VOC) concentration in an emission test chamber atmosphere
<b>Standards</b>	DIN EN ISO 16000-9, DIN ISO 16000-3, DIN ISO 16000-6, DIN CEN/TS 16516
<b>Measurement object</b>	Construction products for indoor use

## SPECIAL FEATURE

<b>Volume of the emission test chambers</b>	0.2 m <sup>3</sup> , 0.225 m <sup>3</sup> and 1 m <sup>3</sup>
---	--

## MORE INFORMATION

Measurement and evaluation according to:

- German AgBB scheme
- evaluation principles of the Deutsches Institut für Bautechnik (DIBt)
- Blue Angel
- French VOC regulation
- Belgian VOC regulation

# INDOOR AIR QUALITY



<b>Measurement</b>	Concentrations of VOCs indoors
<b>Standards</b>	DIN EN ISO 16000-2, DIN EN ISO 16000-5, DIN ISO 16000-3, DIN ISO 16000-6
<b>Measurement object</b>	Residential rooms, offices, nursery schools, kindergartens, class rooms

## SPECIAL FEATURES

- Active air sampling on appropriate adsorbent tubes
- Determination and quantitation of VVOCs, VOCs, SVOCs, volatile organic amines, selected aldehydes and ketones
- Analysis by thermal desorption GC/MS, HPLC/DAD and LC/MS-MS

## MORE INFORMATION

Evaluation according to national and international guidelines, recommendations and regulations

# DETERMINATION OF ODOR EMISSIONS FROM CONSTRUCTION MATERIALS AND ODOR EVALUATION OF INDOOR AIR



<b>Measurement</b>	Determination of odor emissions from building products using test chambers, sensory testing of indoor air
<b>Standards</b>	DIN ISO 16000-28, DIN ISO 16000-30
<b>Measurement object</b>	Construction products Indoor air of residential rooms with and without sampling

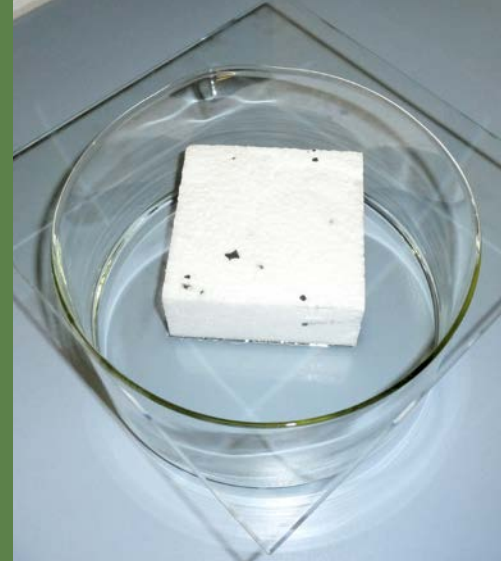
## SPECIAL FEATURE

Determination of odor intensity with and without a comparative scale by a trained panel, hedonic tone and acceptability by an untrained panel

## MORE INFORMATION

Evaluation according to national (Blue Angel, German AgBB scheme) and international guidelines and recommendations

# DETERMINATION OF SUBSTANCE RELEASE FROM IRRIGATED CONSTRUCTION MATERIALS



<b>Measurement</b>	Determination of substance release from construction products into water, determination of sum parameters and individual substances
<b>Standards</b>	Draft standard (Dynamic Surface Leaching Test) according to FprCEN/TS 16637-2, DIN EN 16105
<b>Measurement object</b>	Irrigated construction products for outdoor use like plasters, mortars, paints and roofing material

## SPECIAL FEATURES

Chemical analysis of the leachates depending on the products and their properties:

- 64-day Dynamic surface leaching test (DSL<sub>T</sub>) according to FprCEN/TS 16637-2
- 21-day intermittent leaching test according to DIN EN 16105

## MORE INFORMATION

Evaluation according to national guidelines, recommendations and regulations

# ENVIRONMENTAL IMPACT OF BUILDING PRODUCTS



<b>Measurement</b>	Weathering experiment, release of compounds by influence of driving rain
<b>Standards</b>	Chemical analyses according to or based on DIN EN 1484, DIN 38404-5, DIN EN 27888, DIN EN ISO 10304, DIN EN ISO 17294-2, DIN EN ISO 14911, DIN EN ISO 10301, DIN EN 16691, DIN 38047-35, own testing method
<b>Measurement object</b>	Draining rain water from roofing membranes, façade coatings and façade parts

## TECHNICAL DATA

<b>Sample size</b>	30 × 35 cm up to 100 × 50 cm Other sizes after consultation Complete façade elements (e.g., windows, exterior doors) Miniature houses with a façade area of 300 × 245 cm
<b>Weathering experiment</b>	Investigation of discrete plaster layers, complete plaster systems or complete ETICS on the miniature houses Orientation towards west (test specimen) or towards all four geographic directions (miniature houses)
<b>Measured variables</b>	In drained rain water determination of: <ul style="list-style-type: none"> <li>– sum parameters (pH-value, electric conductivity, Redox potential, TOC, Phenol index, etc.)</li> <li>– inorganic anions</li> <li>– alkali and earth alkali cations</li> <li>– trace elements and heavy metals</li> <li>– biocides</li> <li>– volatile organic halogen-hydrocarbons, benzene and alkyl benzenes (BTXE), styrene</li> <li>– polycyclic aromatic hydrocarbons and other parameters upon request</li> </ul> Determination of the biocide contents in coatings in dependence of exposure time



# EVALUATION OF MICROBIAL GROWTH DEVELOPMENT ON WEATHERED SURFACES



<b>Measurement</b>	Weathering experiment, durability, microbial susceptibility
<b>Standard</b>	Own testing method and published evaluation scheme
<b>Measurement object</b>	Complete walls/wall parts of test houses or special designed test specimen

## TECHNICAL DATA

<b>Sample size</b>	Per variant at least a 1.20 m wide and 2.80 m high wall area or test specimen with an area of approx. 30 × 30 cm
<b>Weathering experiment</b>	Integration of a wall construction into a test house or setting up of test specimen Orientation towards west and/or east or based on consultation
<b>Measured variables</b>	Biological behavior of external construction materials/exterior building parts/façade systems, etc. under the influence of natural climatic conditions Determination of microbial growth development Exact documentation to the point Determination of the risk of complaints

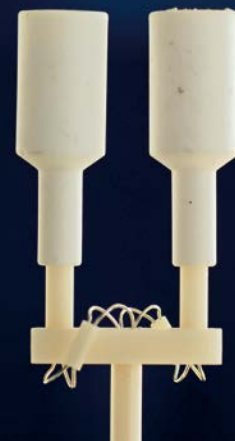
## SPECIAL FEATURES

- After consultation other test sites possible (climate variation)
- Measurement at least quarterly, better monthly; seasonal course

## MORE INFORMATION

Test duration at least 12 months up to several years. Parallel investigation of the composition of the microbial growth allows a better growth management, concrete statements regarding prevention strategies.

# THERMAL ANALYSIS



<b>Measurement</b>	Determination of melting point and crystallization temperature, enthalpy of fusion and enthalpy of crystallization, specific heat, glass transition temperature
<b>Standards</b>	DIN EN ISO 11357-1, DIN EN ISO 11357-2, DIN EN ISO 11357-3, DIN EN ISO 11357-4
<b>Measurement object</b>	Components and materials

## TECHNICAL DATA

<b>Temperature range</b>	-200 to +500 °C Ambient temperature to +1500 °C
--------------------------	--

# THERMO-MECHANICAL ANALYSIS OF COMPONENTS



<b>Measurement</b>	Determination of thermal expansion coefficient, glass transition temperature
<b>Standards</b>	ISO 11359-1, ISO 11359-2
<b>Measurement object</b>	Components and materials

## TECHNICAL DATA

<b>Temperature range</b>	-200 to +500 °C Ambient temperature to +1500 °C
--------------------------	--

# POWDER X-RAY DIFFRACTION



<b>Measurement</b>	Qualitative phase analysis, quantitative phase analysis by Rietveld method, determination of amorphous phase by internal or external standards
<b>Measurement object</b>	Powdered samples or little solid samples: minerals, rocks, cements, slag, ceramics, mineral building materials, concrete, mortars

## TECHNICAL DATA

<b>Diffractometer</b>	D2 phaser
<b>X-ray tube</b>	Cu-radiation (30 kV, 10 mA), Ni filter
<b>Goniometer radius</b>	141.1 mm
<b>Detector</b>	LynxEye (1D detector)
<b>Measurement range</b>	+5 to +140° 2Theta

## SPECIAL FEATURES

<b>LynxEye detector</b>	The one-dimensional detector allows fast measurements with high accuracy.
<b>External standard</b>	The application of an external standard allows the determination of the amorphous phase without contamination of the sample.

## MORE INFORMATION

For the preparation of the samples a micronizing mill (McCrone mill) is used.

# X-RAY FLUORESCENCE ANALYSIS



<b>Measurement</b>	Determination of the chemical composition, elemental analysis
<b>Measurement object</b>	Solids, pressed powders, loose powders, liquids, filters, bulk material

## TECHNICAL DATA

<b>Spectrometer</b>	Epsilon 3 XL
<b>X-ray source</b>	Rh-radiation (9 W), Be-windows
<b>Type of spectrometer</b>	Energy dispersive spectrometer
<b>Detector</b>	Silicon-drift detector (high resolution)
<b>Measurement range</b>	Fluorine to uranium
<b>Accuracy</b>	ppm – %
<b>Number of samples</b>	10-fold sample changer

## SPECIAL FEATURES

<b>Massive samples</b>	Measurement of massive samples with a maximum height of 10 cm possible
<b>Measurement in cups</b>	The measurement in cups allows the investigation of fluids and loose powders.
<b>Helium atmosphere</b>	The measurement in helium atmosphere allows the determination of light elements (e.g., fluorine).
<b>Standardless analysis</b>	A special software enables to achieve the best possible analysis without dedicated methods or certified standards.



MEASUREMENT AND TEST RANGE

# ENERGY SYSTEMS

**Contact**

Head of Department Dr. Dietrich Schmidt | Phone +49 561 804-1871 | [dietrich.schmidt@ibp.fraunhofer.de](mailto:dietrich.schmidt@ibp.fraunhofer.de)



# TEST FACILITY FOR ENERGETIC AND INDOOR ENVIRONMENT INVESTIGATIONS (VERU)



<b>Measurement</b>	Evaluation of façades performance regarding the energy efficiency, durability and quality of thermal and visual comfort
<b>Measurement object</b>	Glass and metal façades, double skin façades, ventilated façades, (switchable) glazing, sun and glare protection systems, daylight redirection systems, façade integrated HVAC components, building integrated PV, solar thermal absorbers, general HVAC components and their integral interaction with the façade, decentralized storage systems, technical mock-ups for complete room concepts

## TECHNICAL DATA

<b>Height between floors</b>	3.8 m
<b>Façade surface area</b>	21 × 15 m <sup>2</sup> (for each test field)
<b>Test cell area (W × D)</b>	4 × 4 m up to 8 × 12 m

## SPECIAL FEATURES

<b>Field measurements of façade and room concepts</b>	Short- and long-term experiments with real climate conditions
<b>1:1 full scale evaluations in step with real usage situations</b>	Integral consideration of façade, room and building service equipment allow a realistic evaluation of the energy consumption and the visual and thermal comfort.

## MORE INFORMATION

Extensive basic equipment of measurement and control systems and building services:

- central supply for heating and chilled water
- supply air preconditioning by heating, cooling, humidification and dehumidification
- freely programmable logic controller, providing among others time-controlled internal heat and moisture sources for simulating usage profiles
- central measurement data acquisition with a web-based analyzing tool (IMEDAS™)
- web browser access to all functionalities (process visualization, database, evaluation templates, measurement channel lists, etc.)

# ENERGETIC TWIN ROOMS



<b>Measurement</b>	Comparative measurements of the thermal, visual and energetic performance of building components, building service components and control strategies
<b>Standard</b>	Test cell geometry according to EN ISO 13791
<b>Measurement object</b>	Glass and metal façades, double skin façades, ventilated façades, (switchable) glazing, sun and glare protection systems, daylight redirection systems, façade integrated HVAC components, building integrated PV, solar thermal absorbers, general HVAC components and their integral interaction with the façade, decentralized storage systems and control strategies

## TECHNICAL DATA

<b>Clear height</b>	2.8 m
<b>Façade surface area</b>	2 × 15 m <sup>2</sup> (on each test field)
<b>Test cell area (W × D)</b>	3.6 × 5.5 m

## SPECIAL FEATURES

<b>Adiabatic envelop</b>	Featured by highly insulated and temperature-controlled building envelops it is possible to minimize the heat flow through internal partitions that are not relevant for the current experiment. This allows the calculation of an extremely precise energy balance for each room.
<b>1:1 full scale evaluations in step with real usage and climate situations</b>	The two identical equipped office rooms provide the possibility for comparing investigations of different office concepts regarding their energy efficiency and the thermal and visual comfort in step with real usage conditions.

## MORE INFORMATION

Extensive basic equipment of measurement and control systems and building services:

- freely programmable, time-controlled ventilation system with heating and cooling functionality
- electrical room heating
- freely programmable logic controller, providing among others time-controlled internal heat and moisture sources for simulating usage profiles
- central measurement data acquisition with a web-based analyzing tool (IMEDAS™)
- web browser access to all functionalities (process visualization, database, evaluation templates, measurement channel lists, etc.)



# TWIN HOUSES



<b>Measurement</b>	Comparative measurements of different building and heating systems under real weather conditions with emphasis on residential buildings
<b>Measurement object</b>	Insulation systems, set ups of walls, windows and roofs, radiators and underfloor heating systems, component and control concepts, intelligent control concepts in smart grids, demand-based ventilation systems, sun protection systems, heating systems

## TECHNICAL DATA

<b>Floor area</b>	82 m <sup>2</sup> (each floor)
<b>Layout</b>	Ground floor: 6 rooms Attic: 2 rooms
<b>Roof pitch</b>	30° (orientation south and north)

## SPECIAL FEATURES

<b>Full size research under real climate boundary conditions</b>	Two structural identical single family houses for comparative examination of different concepts concerning energy efficiency, thermal and visual comfort
<b>Flexible façade design</b>	The structure of the houses has been engineered to admit the replacement of all exterior components on the ground floor.

## MORE INFORMATION

Comprehensive building service installation including measuring and regulating systems:

- freely programmable, time-controlled ventilation system with definable heat recovery
- gas condensing boiler, radiator and underfloor heating
- cooling
- photovoltaic modules (1kW<sub>p</sub>)
- freely programmable, time-controlled internal heat- and moisture sources to simulate user profiles
- central measurement data acquisition including web-based evaluation tools (IMEDAS<sup>TM</sup>)
- web browser access to all functionalities (process visualization, database access, evaluation templates, measurement channels, etc.)

# CALORIMETRIC FAÇADE AND ROOF TEST FACILITY



<b>Measurement</b>	Determination of the energetic and visual performance of (transparent) large-scale façade and roof elements under real climate conditions
<b>Measurement object</b>	Membrane elements, glass and metal façades, double skin façades, (switchable) façades, skylights, light-band, sun and glare protection systems and daylight redirection systems

## TECHNICAL DATA

<b>Max. specimen size</b>	3.2 × 2.3 m
<b>Slope</b>	0 to 90°
<b>Orientation</b>	Approx. 360°

## SPECIAL FEATURES

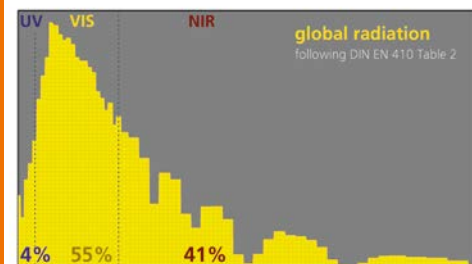
<b>Calorimetric measurement concept</b>	For heating and cooling the internal surfaces of the test chamber are equipped with highly effective water bearing absorbers. From the amount of thermal energy required to keep a certain internal temperature the energetic performance of the specimen can be determined. The SHGC as an example.
<b>3D robot</b>	To investigate specific aspects of local temperatures, air speeds, heat transfer resistances, and lighting and glare evaluations, the facility is equipped with a three-dimensional robot which can be used to position measurement sensors at any point inside the test chamber. By constantly moving this mobile sensor platform it is possible to determine multi-dimensional properties like the areal resolved solar or visual transmissions.

## MORE INFORMATION

Focus of investigation:

- field determination of the solar factor (g-value/SHGC) and the heat transfer coefficient (U value) of full scale façade and roof elements under realistic installation conditions
- determination of angle dependent solar factors/properties
- analysis of the light transmission properties of transparent building elements
- evaluation of the users glare risk due to sun shades
- development of test and valuation procedures for novel building elements

# UV/VIS/NIR SPECTROMETER



<b>Measurement</b>	UV-, light- and solar direct transmittance, light- and solar direct reflectance, diffuse reflectance, solar direct absorptance, total solar energy transmittance (solar factor), color rendering index
<b>Standards</b>	DIN EN 410, DIN 6169, DIN 5033, DIN EN 13363
<b>Measurement object</b>	Glass, sun shade, glare protection, fabric, synthetic, foil, membrane, metal, plaster, paint coating, concrete surface, coatings

## TECHNICAL DATA

<b>Measuring range</b>	300 to 2500 nm (UV/Vis/NIR-range)
<b>Accessory</b>	Integrating sphere (150 mm)
<b>Size of test samples</b>	5 × 5 cm other sizes on request

## SPECIAL FEATURE

Measurement and evaluation according to international standards

## MORE INFORMATION

The measurement takes place in the testing laboratory for "moisture, mortar, radiation and emissions", which has got the flexible accreditation by the Deutsche Akkreditierungsstelle (DAkkS). Therefore it is authorized – in addition to employing standard test methods – to develop new or modify and improve existing test methods.

# FOURIER SPECTROMETER



<b>Measurement</b>	Emissivity (direct-hemispherical)
<b>Standards</b>	DIN EN 12898, DIN EN 673
<b>Measurement object</b>	Glass, sun shade, glare protection, fabric, synthetics, foil, membrane, metal, plaster, paint coating, concrete surface, coatings

## TECHNICAL DATA

<b>Measuring range</b>	2.5 to 25 $\mu\text{m}$ (MIR range)
<b>Accessory</b>	Integrating sphere (75 mm)
<b>Size of test samples</b>	Width max. 150 mm, thickness max. 9 mm other sizes on request

## SPECIAL FEATURE

Measurement and evaluation according to international standards

## MORE INFORMATION

The measurement takes place in the testing laboratory for "moisture, mortar, radiation and emissions", which has got the flexible accreditation by the Deutsche Akkreditierungsstelle (DAkkS). Therefore it is authorized – in addition to employing standard test methods – to develop new or modify and improve existing test methods.

# ATTIC FLOOR TEST FACILITY



<b>Measurement</b>	Comparative measurements of different building and heating systems under real weather conditions with emphasis on lightweight building and attic floors
<b>Measurement object</b>	Insulation systems, set ups of walls, windows and roofs, underfloor heating systems, component and control concepts, sun protection systems, thermal storage systems, e.g., on the basis of PCM (Phase Change Materials), air-to-water heat pumps

## TECHNICAL DATA

<b>Floor area (per test room)</b>	12 m <sup>2</sup>
<b>Roof area (per test room)</b>	6.64 m <sup>2</sup> with each having one window
<b>Number of test rooms</b>	3

## TECHNICAL DATA (AIR-TO-WATER HEAT PUMP)

<b>Net-heating capacity (A2/W25)</b>	5.6 kW
<b>Net-cooling capacity (A35/W7)</b>	8.8 kW

## SPECIAL FEATURE

<b>Full size research under real climate boundary conditions</b>	Three identical living rooms for comparative, close to practise investigations of divers building concepts with respect to energy efficiency, thermal and visual comfort
--	--

## MORE INFORMATION

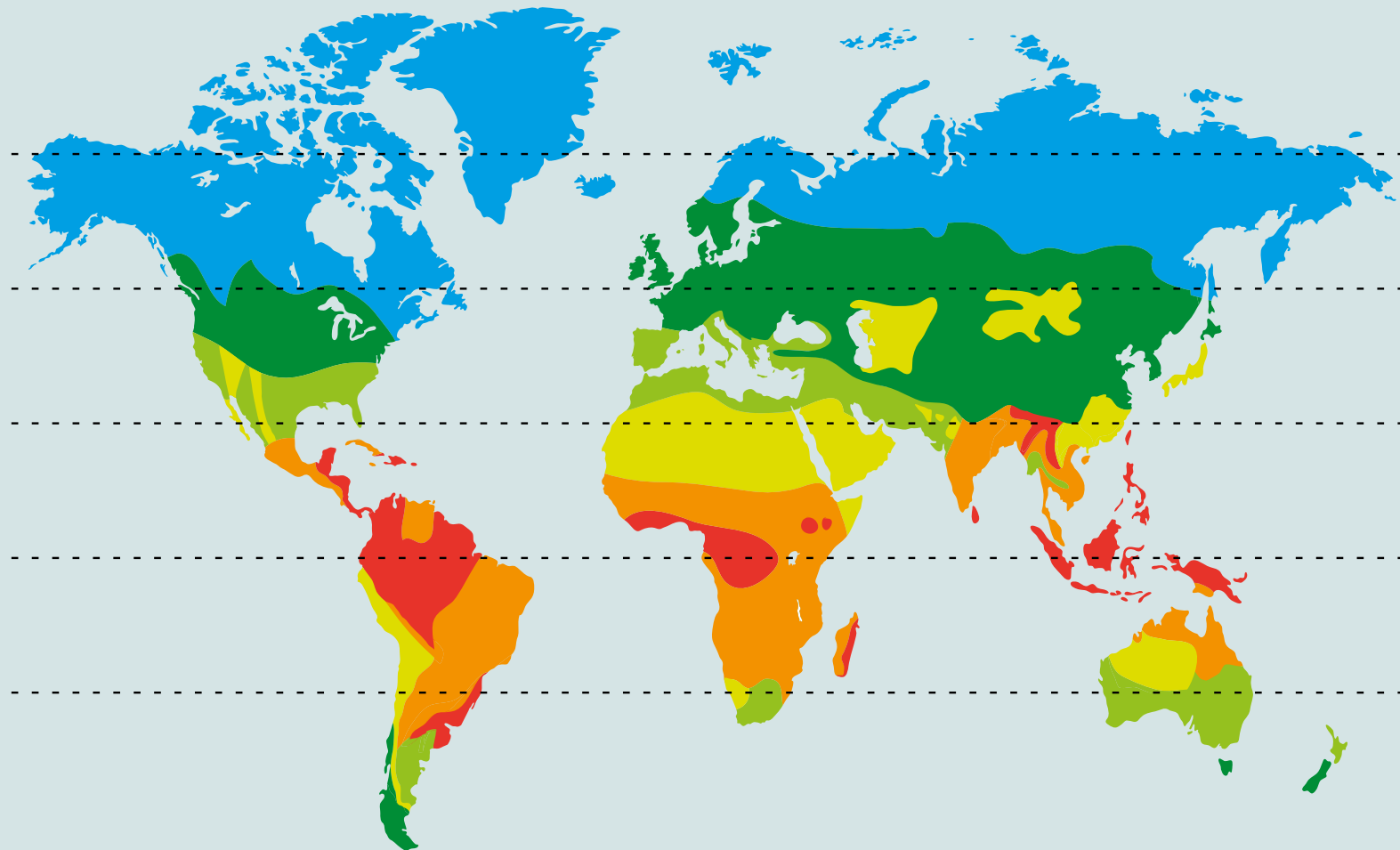
- Comprehensive building service installation including measuring and regulating systems
- Heat pump system for defined heating and cooling of the test rooms
- Controllable shading system

MEASUREMENT AND TEST RANGE

# HYGROTHERMICS

Contact

Head of Department Dr. Hartwig Künzel | Phone +49 8024 643-245 | [hartwig.kuenzel@ibp.fraunhofer.de](mailto:hartwig.kuenzel@ibp.fraunhofer.de)



# THERMAL CONDUCTIVITY BY THE GUARDED HOT PLATE APPARATUS



<b>Measurement</b>	Thermal conductivity $\lambda$ , thermal resistance R, and thermal transmittance U
<b>Standards</b>	DIN EN 12664, DIN EN 12667, DIN EN 674, DIN 52612
<b>Measurement object</b>	Homogenous plates, inhomogeneous test specimens: porous, fibrous or granular materials, components laminated, profile plates, glazing elements, sections of building bricks

## TECHNICAL DATA

<b>Measuring surface</b>	120 × 120 mm, 150 × 150 mm and 500 × 500 mm
<b>Test specimen dimensions</b>	Square specimens with side lengths between 120 and 900 mm and thicknesses between 5 and 300 mm
<b>Mean specimen temperature</b>	–160 up to +250 °C, depending on the equipment
<b>Measuring range</b>	Thermal conductivity between 0.01 and 2.0 W/(m·K)

## SPECIAL FEATURES

<b>Measuring setup</b>	Horizontal and vertical direction
<b>Ambient conditions</b>	Measurements in vacuum or in a protective atmosphere possible

## RECOGNITIONS

The test laboratory is recognized by the Deutsches Institut für Bautechnik (DIBt) as a testing facility under applicable building regulations LBO No. BWU10 and as a Notified Body No. 1004 to the terms of the Regulation of Construction Products (EU-BauPVO). It has been granted flexible accreditation under DIN EN ISO/IEC 17025 by the Deutsche Akkreditierungsstelle GmbH (DAkkS) under accreditation No. D-PL-11140-11-04.



# AIR PERMEABILITY BY TEST FACILITY FOR IMPERMEABILITY



<b>Measurement</b>	Air permeability
<b>Standards</b>	DIN EN 1026, DIN EN 12207, DIN EN 12427, DIN EN 12426, DIN EN 12153, DIN EN 12152, DIN EN 12114, DIN EN 12835, DIN EN 13141
<b>Measurement object</b>	Windows, doors, gates, curtain walls façades, roof or wall elements (conservatories, glazing elements with integrated sun blinds), foils, adhesive tapes

## TECHNICAL DATA

<b>Test specimen dimensions</b>	Height and width up to 4000 mm each, thickness: layers up to 400 mm, roofs up to 8 m length
<b>Measuring range</b>	Air pressure up to 5000 Pa
<b>Air pressure</b>	Static, alternating load (pressure-suction), pulsating
<b>Temperature</b>	-20 up to +70 °C

## SPECIAL FEATURES

<b>Specific testing</b>	According to a defined test program
<b>Leakage detection</b>	By means of a fog machine and flow probes

## RECOGNITIONS

The test laboratory is recognized by the Deutsches Institut für Bautechnik (DIBt) as a testing facility under applicable building regulations LBO No. BWU10 and as a Notified Body No. 1004 to the terms of the Regulation of Construction Products (EU-BauPVO). It has been granted flexible accreditation under DIN EN ISO/IEC 17025 by the Deutsche Akkreditierungsstelle GmbH (DAkkS) under accreditation No. D-PL-11140-11-04.

# WATER TIGHTNESS AGAINST DRIVING RAIN BY TEST FACILITY FOR IMPERMEABILITY



<b>Measurement</b>	Water tightness against driving rain
<b>Standards</b>	DIN EN 1027, DIN EN 12208, DIN EN 12489, DIN EN 12425, DIN EN 12155, DIN EN 12154, DIN EN 12865
<b>Measurement object</b>	Windows, doors, gates, curtain walls façades, roof or wall elements (conservatories, glazing elements with integrated sun blinds), foils, adhesive tapes

## TECHNICAL DATA

<b>Test specimen dimensions</b>	Height and width up to 4000 mm each, thickness: layers up to 400 mm, roofs up to 8 m length
<b>Driving rain</b>	e.g., 2L/min/m <sup>2</sup> at a simultaneous pressure of more than 1000 Pa
<b>Temperature</b>	-20 up to +70 °C

## SPECIAL FEATURE

<b>Specific testing</b>	According to a defined test program: Performance under thermal and hygric load Performance under freeze-thaw cycling
-------------------------	--

## RECOGNITIONS

The test laboratory is recognized by the Deutsches Institut für Bautechnik (DIBt) as a testing facility under applicable building regulations LBO No. BWU10 and as a Notified Body No. 1004 to the terms of the Regulation of Construction Products (EU-BauPVO). It has been granted flexible accreditation under DIN EN ISO/IEC 17025 by the Deutsche Akkreditierungsstelle GmbH (DAkkS) under accreditation No. D-PL-11140-11-04.

# RESISTANCE TO WIND LOAD BY TEST FACILITY FOR IMPERMEABILITY



<b>Measurement</b>	Resistance to wind load
<b>Standards</b>	DIN EN 12211, DIN EN 1221, DIN EN 12444, DIN EN 12424, DIN EN 12179, DIN EN 13166
<b>Measurement object</b>	Windows, doors, gates, curtain walls façades, roof or wall elements (conservatories, glazing elements with integrated sun blinds), foils, adhesive tapes

## TECHNICAL DATA

<b>Test specimen dimensions</b>	Height and width up to 4000 mm each, thickness: layers up to 400 mm, roofs up to 8 m length
<b>Measuring range</b>	Air pressure up to 5000 Pa
<b>Air pressure</b>	Static, alternating load (pressure-suction), pulsating
<b>Temperature</b>	-20 up to +70 °C

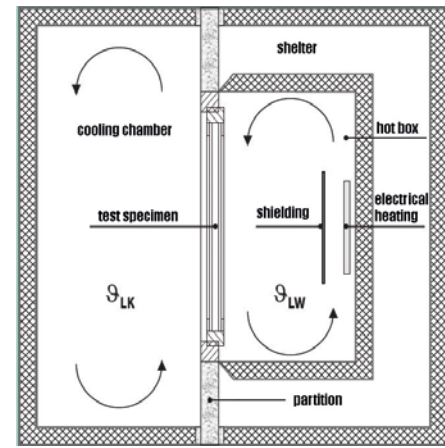
## SPECIAL FEATURES

<b>Specific testing</b>	According to a defined test program
<b>Leakage detection</b>	By means of a fog machine and flow probes

## RECOGNITIONS

The test laboratory is recognized by the Deutsches Institut für Bautechnik (DIBt) as a testing facility under applicable building regulations LBO No. BWU10 and as a Notified Body No. 1004 to the terms of the Regulation of Construction Products (EU-BauPVO). It has been granted flexible accreditation under DIN EN ISO/IEC 17025 by the Deutsche Akkreditierungsstelle GmbH (DAkkS) under accreditation No. D-PL-11140-11-04.

# THERMAL RESISTANCE AND THERMAL TRANSMITTANCE IN THE HOT BOX



<b>Measurement</b>	Thermal resistance R and thermal transmittance U
<b>Standards</b>	DIN EN ISO 12567-1, DIN EN ISO 12567-2, DIN EN 12412-2, DIN EN 12412-4, DIN EN ISO 8990
<b>Measurement object</b>	Windows (frame and glazing), profiles, skylights, doors, roller shutter casings, roof elements, façade elements, walls

## TECHNICAL DATA

<b>Test opening, test specimen dimensions (W × H)</b>	1230 × 1480 mm 1400 × 1600 mm 1100 × 1600 mm 1600 × 2000 mm
<b>Small specimens</b>	From approx. 1.5 m <sup>2</sup> , measurements can be conducted by means of masks made of insulating material
<b>Larger specimens</b>	Measurement in the climate simulator

## RECOGNITIONS

The test laboratory is recognized by the Deutsches Institut für Bautechnik (DIBt) as a testing facility under applicable building regulations LBO No. BWU10 and as a Notified Body No. 1004 to the terms of the Regulation of Construction Products (EU-BauPVO). It has been granted flexible accreditation under DIN EN ISO/IEC 17025 by the Deutsche Akkreditierungsstelle GmbH (DAkkS) under accreditation No. D-PL-11140-11-04.

# CLIMATE SIMULATION IN THE BIG CLIMATE SIMULATOR



<b>Measurement</b>	Protection against heat and against cold, moisture proofing, weather proofing, HVAC analyses, sun simulation, rain simulation, durability testing
<b>Measurement object</b>	Building components, complete building elements, prefabricated house elements, façade elements, walls, ceilings, roof constructions, flat roof systems, design of insulation materials, sandwich constructions, windows, doors, components with thermal bridges, shutter systems, skylights, components for the renovation of building elements, etc.

## TECHNICAL DATA

<b>Internal size (L × W × H)</b>	7.0 × 6.0 × 5.8 m
<b>Temperature range</b>	–15 to +55 °C
<b>Humidity range</b>	Dew-point temperature +2 to +27 °C Relative humidity 35 to 85 %

## SPECIAL FEATURES

<b>Equipment for temperature control of test specimens</b>	Temperature range –15 up to +55 °C Air circulation 1000 to 6000 m³/h
<b>Programmable climate control</b>	Examination of stationary and transient heat and moisture transfer mechanism

## MORE INFORMATION

- Door opening (W × H) 2.00 × 3.20 m
- Thermal cycling (without load), cooling rate 15 K/h, heating rate 15 K/h
- Air circulation (laminar or turbulent) 7000 to 30,000 m³/h
- Max. thermal load 76 kW
- Max. point load 20,000 N
- Max. total load 150,000 N

# CLIMATE SIMULATION IN THE THREE-CHAMBER CLIMATE SIMULATOR



<b>Measurement</b>	Stationary and transient processes of thermal conductivity and humidity penetration, U-value, storage properties of building components, alternating climate loads, thermal bridges, condensation, cavity convection, vapor diffusion processes, day/night simulation
<b>Measurement object</b>	Large façade and roof elements, prefabricated house elements, door and window elements, thermal insulation by means of external shutters, roller blinds, etc., composite constructions with thermal bridges, multi-layer building components with cavities, charging and discharging cycles of heat storage facilities, equipment for ventilation, heat recovery installations, absorber elements

## TECHNICAL DATA

<b>Internal size (L × W × H)</b>	Chamber 1 and 2 2.0 × 4.0 × 2.7 m Chamber 3 2.4 × 4.0 × 2.9 m
<b>Temperature range (chamber 1 and 2/chamber 3)</b>	−30 up to +80 °C
<b>Humidity range (chamber 1 and 2/chamber 3)</b>	Dew-point temperature +2.5 to +58 °C Relative humidity 10 to 95 %

## SPECIAL FEATURES

<b>Applications</b>	Up to three simultaneous stationary investigations, programmable alternating climate in each chamber, time lapse investigations, rapid change of temperature
<b>Chambers can be moved</b>	Chamber 1 is stable, chambers 2 and 3 can be moved

## MORE INFORMATION

Alternating climate control: (without load), cooling-off rate 50 K/h, heating rate 85 K/h

# CLIMATE SIMULATION IN CLIMATE CHAMBERS AND CLIMATE CABINETS



<b>Measurement</b>	Temperature and relative humidity changes, freeze-thaw resistance, durability, aging, air-conditioned storing
<b>Standard</b>	DIN EN 12091
<b>Measurement object</b>	Small-sized building components and building materials, thermal insulating products for building applications

## TECHNICAL DATA

<b>Volume of space</b>	Climate chambers approx. 4.6 m <sup>3</sup> and 7 m <sup>3</sup> climate cabinets 0.35 m <sup>3</sup> and 1.50 m <sup>3</sup>
<b>Temperature range</b>	Climate chambers +10 to +60 °C climate cabinets –70 to +180 °C
<b>Relative humidity</b>	Climate chambers 20 to 90 % climate cabinets 10 to 98 %



# THERMAL CONDUCTIVITY OF CONCENTRIC PIPE INSULATION



<b>Measurement</b>	Thermal conductivity
<b>Standards</b>	DIN EN ISO 8497, EN 14313, EN 14303, EN 14305
<b>Measurement object</b>	Concentric pipe insulation, tubular homogeneous and approximately homogeneous as well as layered test specimens (hollow cylinders, half shells, segments)

## TECHNICAL DATA

<b>Measurement section</b>	1.5 m
<b>Test specimen dimensions</b>	Length 3 m, external diameter up to 500 mm
<b>Carrier pipe diameters</b>	From 15 to 87 mm; special dimensions on request
<b>Mean specimen temperature</b>	Within a range of approx. -20 to +90 °C
<b>Measurement range</b>	Smaller than 1 W/m·K

## RECOGNITIONS

The test laboratory is recognized by the Deutsches Institut für Bautechnik (DIBt) as a testing facility under applicable building regulations LBO No. BWU10 and as a Notified Body No. 1004 to the terms of the Regulation of Construction Products (EU-BauPVO). It has been granted flexible accreditation under DIN EN ISO/IEC 17025 by the Deutsche Akkreditierungsstelle GmbH (DAkkS) under accreditation No. D-PL-11140-11-04.

## MORE INFORMATION

- Determination of energy savings, prevention of condensation, corrosion protection, service temperature, values for CE marking
- Pipe insulation, e.g., made of PE cellular plastics, PIR rigid foam, mineral wool, PU cellular plastics, foam glass, vinyl rubber, PS rigid foam in hoses, half shells, wound strands

# CALCULATION OF THERMAL PARAMETERS BY COMPUTER-AIDED THERMAL ANALYSIS OF BUILDING COMPONENTS



<b>Measurement</b>	Thermal transmittance U, linear thermal transmittance $\psi$ , thermal resistance R, equivalent thermal conductivities, temperatures and temperature gradients, dew-point temperatures, heat flow and heat flow densities
<b>Standards</b>	DIN EN ISO 10211, DIN EN ISO 10077
<b>Measurement object</b>	Window profiles, frame profiles, glass edge bond, spacers of laminated insulation glazing units, shutter boxes, masonry units, masonry, roof and façade elements with thermal bridges, cavities, fixing elements

## TECHNICAL DATA

<b>Calculation program</b>	STATWL, PHYSIBEL
<b>Data of specimens</b>	Completely dimensioned drawings, e.g., CAD drawing in DXF format, material properties (thermal conductivity, transient also density $\rho$ , specific heat capacity $c_p$ ),

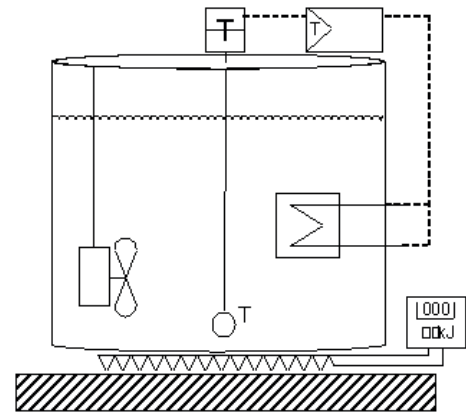
## SPECIAL FEATURES

<b>Variety of calculation</b>	Transient and stationary temperature, two- and three-dimensional,
<b>Presentation</b>	Parameters, graphic presentation of the results

## RECOGNITIONS

The test laboratory is recognized by the Deutsches Institut für Bautechnik (DIBt) as a testing facility under applicable building regulations LBO No. BWU10 and as a Notified Body No. 1004 to the terms of the Regulation of Construction Products (EU-BauPVO). It has been granted flexible accreditation under DIN EN ISO/IEC 17025 by the Deutsche Akkreditierungsstelle GmbH (DAkkS) under accreditation No. D-PL-11140-11-04.

# HEAT DISSIPATION OF FLOORS



<b>Measurement</b>	Heat dissipation of floors
<b>Standard</b>	DIN 52614 (withdrawn)
<b>Measurement object</b>	Homogeneous and approximately homogeneous as well as layered floor structures and coverings such as PVC, cork, parquet, linoleum, textile fibers, tiles, industrial floor coverings, polyester resin sheets, etc.

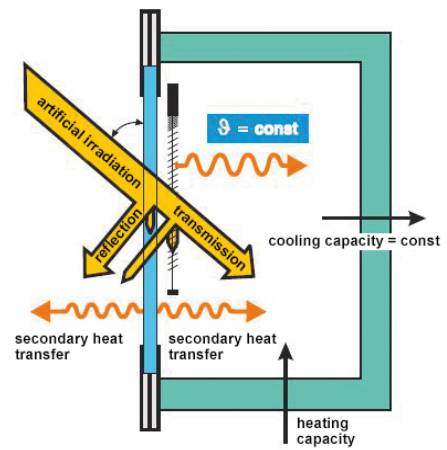
## TECHNICAL DATA

<b>Test specimen dimensions</b>	500 × 500 mm
---------------------------------	--------------

## MORE INFORMATION

- Even as the standard is withdrawn, this measuring method is still used because of the significance of the results
- Heat dissipation levels from “not sufficiently warm to the feet” (level I) over “sufficiently warm to the feet” (level II) up to “particularly warm to the feet” (level III)

# SOLAR HEAT GAIN COEFFICIENT (SHGC) BY CALORIMETER METHOD



<b>Measurement</b>	Solar heat gain coefficient (SHGC), g-value
<b>Standards</b>	In addition to DIN EN 410 and DIN EN 13363-2
<b>Measurement object</b>	Glazings with shading systems or with more than 3 panes, high-scattering glazing, special components with integrated sun protection, domed building components (domed roof lights, membrane constructions), transparent specimens, vehicle constructions, screen printing or three-dimensional fabrics

## TECHNICAL DATA

<b>Standard size and area of aperture</b>	1 m <sup>2</sup> , minimum of 0.5 m <sup>2</sup>
<b>Test specimen dimensions</b>	Minimum edge length 0.6 m, maximum of 2.9 m depending on construction

## SPECIAL FEATURE

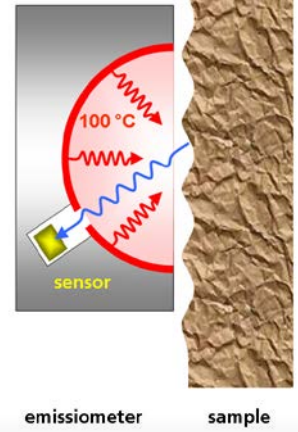
<b>Test method</b>	<p>Nondestructive test method on special components, which are not included in above mentioned standards. This method is according to the latest state of technology but no normative standard yet.</p> <p>The specimen is exposed to artificial solar radiation in the range 300 to 900 W/m<sup>2</sup>. Then an energy balance is performed for the Hot Box behind the sample for defined environmental conditions.</p>
--------------------	---

## MORE INFORMATION

Additional method for above mentioned standards if optical parameters, gas fill rates or emission coefficients are missing or not available. A common application is the determination of g-values for glazings in existing buildings or for the acceptance of construction.



# EMISSION COEFFICIENT



<b>Measurement</b>	Thermal emission coefficient and reflection coefficient
<b>Standards</b>	DIN EN 16012 (attachment D), alternative method for DIN EN 12898 and DIN EN 673
<b>Measurement object</b>	Glass including functional layers, insulation materials, roofing underlays or coverings, building panels, façades, floor coverings, concrete, asphalt, IR-reflecting films and almost all surfaces and structures with roughness up to 10 mm, opaque to IR radiation, varnishes and paints on substrate

## TECHNICAL DATA

<b>Spectral range</b>	2.5 to 40 $\mu\text{m}$
<b>Measurement range</b>	0.02 to 0.99 %
<b>Test specimen dimensions</b>	Optional, minimum size 100 × 100 mm

## SPECIAL FEATURE

<b>Scope of application</b>	Nondestructive method, investigation of already existing building products, quality control during production
-----------------------------	---

## MORE INFORMATION

- Surfaces preferably mounted in vertical position ( $\pm 30^\circ$ )
- In-situ measurements under appropriate conditions possible

# TEST FACILITY FOR SOLAR REFLECTANCE INDEX (SRI)



<b>Measurement</b>	Solar Reflectance Index (SRI), warming potential under high irradiation
<b>Standards</b>	ASTM E 1980, further procedures ASTM E 1918, ASTM E 903, DIN EN 410, LEED rating
<b>Measurement object</b>	Roofing, tiles, façade sheeting, varnishes and paints, precast concrete parts, asphalt, pavers, parking area, streets, terrace slabs as well as other thin layers of building material layers, which are used in façades, roofs or other parts of building envelope or traffic areas

## TECHNICAL DATA

<b>Boundary conditions</b>	1000 W/m <sup>2</sup> , T <sub>amb</sub> = 37 °C h <sub>c</sub> = 5, 12, 30 W/(m <sup>2</sup> K)
<b>Measurement range</b>	SRI 0 to 100
<b>Input characteristics</b>	Solar reflectance and thermal emissivity
<b>Size of test samples</b>	Any type as long as minimum size within 100 × 100 mm for closed surfaces, minimum size of 16 m <sup>2</sup> for bulk materials are considered.

## SPECIAL FEATURES

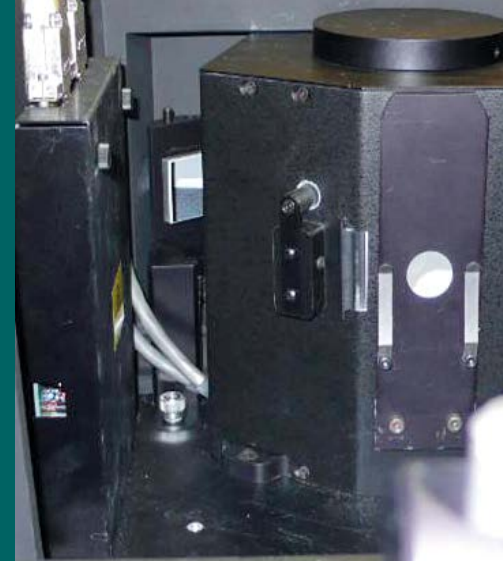
<b>Universal usage</b>	Nondestructive method to determine the warming potential of building surfaces, investigations for existing constructions possible, with a variety of auxiliary methods it can also be used on surfaces with structure and for bulk materials, e.g., gravel on roofs
<b>Method</b>	Relative procedure for the determination of the warming potential of a surface in comparison with a black and a white surface

## MORE INFORMATION

In-situ measurements available under appropriate conditions



# SPECTROPHOTOMETER



<b>Measurement</b>	Absorbance, transmittance and reflectance (UV/VIS/NIR), radiation and optical technical parameters preferably in the solar spectrum
<b>Standards</b>	DIN EN 410, ASTM E 903, DIN EN 13363-2
<b>Measurement object</b>	Organic and mineral glasses, functional layers, varnishes and paints, plastics, concrete, wood-based materials, building boards, metal sheets, light-directing building components and other transparent, translucent or opaque building materials

## TECHNICAL DATA

<b>Measurement range</b>	185 to 3300 nm
<b>Resolution</b>	UV/VIS < 0.05 nm, NIR < 0.2 nm
<b>Integrating sphere</b>	150 mm diameter
<b>Size of test samples (W x B x L)</b>	Preferably 50 × 50 × < 10 mm For reflection measurements special sizes up to 0.5 m <sup>2</sup> and thicknesses up to 100 mm possible

## SPECIAL FEATURES

- Testing facility for determination of optical input parameters for calculation methods as DIN EN 410 and DIN EN 13363-2
- Nondestructive laboratory procedure, short measuring time, high reproducibility

## MORE INFORMATION

A combination of Tungsten and Deuterium light sources enables a big variety of the measuring range.

# SOLAR SIMULATOR FOR LARGE BUILDING COMPONENTS



<b>Measurement</b>	Thermal load tests, spontaneous failure, temperature of building components, g-value (SHGC/total energy transmittance), fitness for purpose, aging behavior, thermal expansion, fogging of closed glass façades
<b>Standards</b>	Alternative method to DIN EN 410, DIN EN 13363-2, DIN EN 4892
<b>Measurement object</b>	Façades and roof components with opaque, translucent or transparent partial areas, transparent building components with light-directing elements, sun protection or shading facilities, also in interspace between the panes, glazing with integrated photovoltaics

## TECHNICAL DATA

<b>Irradiated area</b>	1 to 8 m <sup>2</sup>
<b>Effective irradiance</b>	500 to 1200 W/m <sup>2</sup>
<b>Sun elevation angle</b>	0 to 90°
<b>Quality of radiation</b>	Solar-near spectrum, mainly parallel beams, variable diffuse component up to 100 % possible
<b>Installation of the specimens</b>	Wall to roof (0 to 90° continuously)

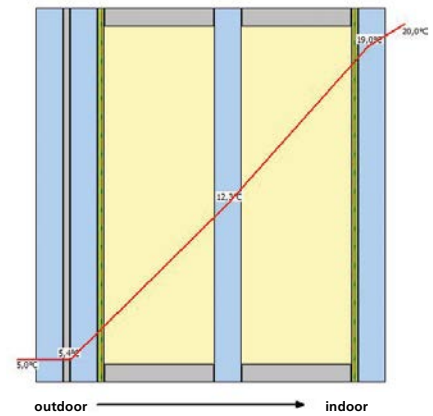
## SPECIAL FEATURES

- The solar simulator reproduces almost all global radiation loads on building components in their original size and original mounting position. Smaller specimen can be irradiated with higher intensity, e.g., aviation
- Weather-independent test facility with reproducible boundary conditions

## MORE INFORMATION

For long-term weathering testing and thermal load tests additional solar simulation facilities for sizes between 180 × 260 mm and 4 m<sup>2</sup> are available.

# TEST FACILITY FOR DETERMINATION OF $U_g$ ESPECIALLY FOR EXISTING GLAZINGS



<b>Measurement</b>	$U_g$ according to DIN EN 673 (thermal transmittance coefficient), based on analysis of filling gas or residual oxygen, thermal emissivity, construction of glazing
<b>Standard</b>	DIN EN 673 (alternative procedure to DIN EN 674, DIN EN 675)
<b>Measurement object</b>	multiple glazing with 2 to 5 individual panes, thermal insulation glazing, solar control glazing, post-control of already existing glazings

## TECHNICAL DATA

<b>Test specimen dimensions</b>	Any dimensions
<b>Analysis of filling gas</b>	Determination of air, argon and krypton in the gap between the panes (0 to 100 %) by means of analysis of residual oxygen and thermal conductivity detector
<b>Emissivity</b>	0.02 to 0.99 %
<b><math>U_g</math></b>	0.3 to 3.0 W/(m <sup>2</sup> K)

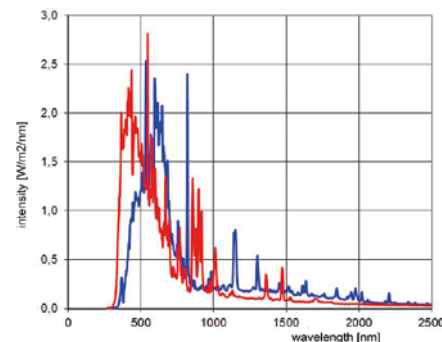
## SPECIAL FEATURES

<b>Special dimensions</b>	This procedure is particularly suitable for glazings, which doesn't comply to standard parameters of measuring in the Hot Plate Apparatus or Hot Box
<b>Installation</b>	Due to the combination of calculation and measuring, the real mounting position can be considered by the calculation
<b>Acceptance testing</b>	Verification of the actual glazing quality during acceptance of construction

## MORE INFORMATION

Besides the analysis of filling gas, a filling operation with noble gases for multiple glazing is also available. Any gas filling rates can be performed, e.g., for additional examinations of prototypes.

# SPECTRORADIOMETER



<b>Measurement</b>	Spectrum of emitted radiation from light sources, transmission, absorption and reflection, evaluation of solar simulation equipment, spectral analysis of daylight, integral and wavelength-dependent irradiance
<b>Standards</b>	Additional/special procedure for DIN EN 410, generation of spectral match reports for measuring class, performance as per IEC 60904, ASTM E 927, colorimetry CIE 1931 and CIE 1964
<b>Measurement object</b>	Light sources of any type, solar simulation facilities, glazing façades, roof and wall building components

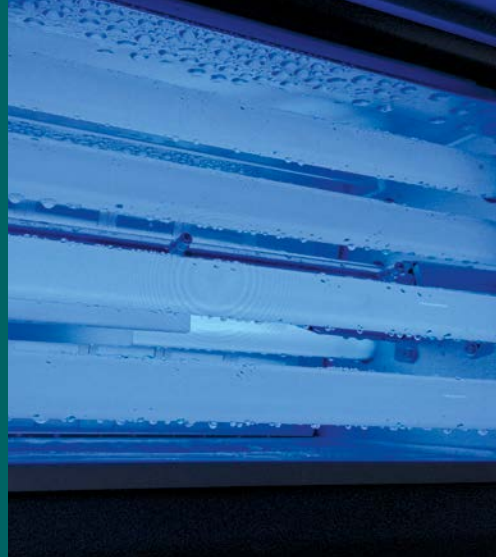
## TECHNICAL DATA

<b>Test specimen dimensions</b>	Any dimensions
<b>Integration time</b>	5 to 10 s
<b>Resolution</b>	Wavelength-dependent 1 to 10 nm
<b>Viewing angle</b>	150°
<b>Installation of the specimens</b>	Wall to roof (0 to 90° continuously variable)

## SPECIAL FEATURES

<b>Building dimensions</b>	Due to the compact size, the spectroradiometer is portable and can be used locally during customer visits. A 3 m long glass fibre disconnects the sensor head from the spectrometer. Therefore measurement is independent on location and can be operated in narrow spaces.
<b>Temperature range</b>	Sensor head -30 to +70 °C, noncondensing
<b>Intensity of irradiation</b>	Integration can be done very fast on a wide variety of bandwidths within the measurement range
<b>Calibration</b>	Traceable to NIST

# ARTIFICIAL AGEING BY COMBINED EXPOSURE TO RADIATION, HUMIDITY AND TEMPERATURE



<b>Measurement</b>	Change of material and component properties, e.g. strength, hardness, embrittlement, chalking, fading, transmittance, emissivity, yellowing, geometry
<b>Standards</b>	DIN EN 927-6, DIN EN 1297, DIN EN 1898, DIN EN 12224, DIN EN 12543-4, DIN EN 13523-10, DIN EN 75220, DIN EN ISO 4892-1, DIN EN ISO 4892-2, DIN EN ISO 4892-3, DIN EN ISO 11507, DIN EN ISO 11895, DIN EN ISO 11997-2, ASTM D 3424, ASTM D 4329, ASTM D 4587, ASTM D 4799, ASTM D 5071, ASTM D 5208, ASTM D 6695, ASTM G 151, ASTM G 154, ASTM G 155, SAE J 2020, prEN 1062-4
<b>Measurement object</b>	Organic glasses, films, coatings, paints, plastics, gaskets, sealants, roof linings, bitumen and elastomer roofing sheets, vehicle and façade components

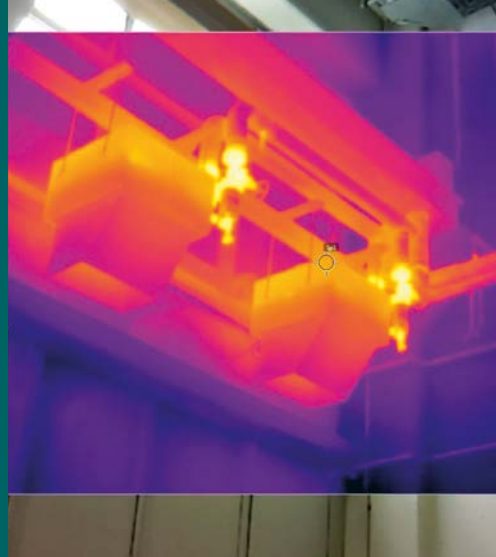
## TECHNICAL DATA OF INDIVIDUAL SPECTRAL RANGES

<b>UV-A (fluorescent tubes)</b>	Spectral range	300 to 400 nm, max. 340 nm
	Irradiation	0.35 to 1.65 W/m <sup>2</sup> at +35 to +80 °C
	Humidity (cyclic)	condensing or spraying
	Sample size	76 × 152 mm (48 pieces) to 488 × 311 × 25 mm (4 pieces)
<b>Solar, Device A (Xenon lamps)</b>	Spectral range	300 to 800 nm
	Irradiation	250 to 765 W/m <sup>2</sup> at +35 to +100 °C
	Humidity	cyclic underwater storage
	Max. sample size	190 × 280 mm
<b>Solar, Device B (metal halide lamps)</b>	Spectral range	280 to 3000 nm
	Irradiation	800 to 1200 W/m <sup>2</sup> at –40 to +120 °C
	Humidity	rel. humidity 20 to 80 %
	Max. sample size	900 × 1500 mm, height by arrangement

## SPECIAL FEATURES

<b>Reduced testing periods</b>	By reducing or omitting dark phases and consistently high irradiances typical load durations are 1 to 8 weeks. The testing periods are thus shorter than in outdoor exposure.
<b>Reproducibility</b>	Reduced number of variables, therefore, they can be better monitored. Artificial ageing is more reproducible than natural weathering. Thus, comparisons between different products are easier possible.
<b>Calibration</b>	Yes. Traceable reference standards are available.

# INFRARED (IR) LABORATORY



<b>Measurement</b>	Thermal radiation, temperatures, temperature distributions by thermography
<b>Standards</b>	DIN EN 13187, DIN 54190, ISO 18434-1
<b>Measurement object</b>	Technical building equipment, fireplaces, exhaust systems, façades and roof structures, thermal bridging, moisture retention, location of supply lines under plaster, vehicles, temperature analysis of larger surfaces and components, visualization of transient temperature behavior

## TECHNICAL DATA OF INDIVIDUAL DETECTORS

<b>Thermographic camera</b>	Spectral range	7.8 to 14 $\mu\text{m}$
	Temperature range	-40 to +2000 °C, resolution 0.04 K
	IR image	frequency 30 Hz, 640 × 480 pixel
	Lenses	wide-angle 45°, 1.23 mrad
	Integrated digital camera, continuous superposition possible	
<b>IR-video camera</b>	Spectral range	7.5 to 13 $\mu\text{m}$
	Temperature range	-20 to +900°C, resolution 0.1 K
	IR image	frequency 100 Hz, 120 × 160 pixel
	Lenses	standard, wide-angle, telephoto
<b>IR temperature sensors (special applications)</b>	Spectral range	a) 2.3 $\mu\text{m}$ b) 8 to 14 $\mu\text{m}$
	Temperature range	a) +50 to +400°C, resolution 0.2 K b) -40 to +900°C, resolution 0.1 K

## SPECIAL FEATURES

<b>Emissivity</b>	Adjustable (afterwards) 0.1 to 1.0
<b>Formats (camera dependent)</b>	In addition to radiometric images also fully radiometric video can be created. There will also be saved all temperature information.
<b>Recording</b>	Trigger and timed recordings are possible.
<b>Calibration</b>	A precision Infrared Calibrator for the temperature range +35 to +500° C, emissivity = 0.95 is available as a reference standard.

# WATER VAPOR TRANSMISSION PROPERTIES



<b>Measurement</b>	Water vapor resistance factor, diffusion equivalent air layer thickness
<b>Standards</b>	DIN EN ISO 12572, DIN EN 12086, DIN EN ISO 7783-2, DIN 1931, DIN 53122-1, ASTM E 96-95
<b>Measurement object</b>	Mineral materials like brick, lime stone, sandstone, concrete, plasters and renders, insulation materials, flexible sheets for waterproofing, roof underlays, etc.

## TECHNICAL DATA

<b>Sample size, circular</b>	Diameter 90 mm, 100 mm, 200 mm
<b>Sample size, rectangular (L × W)</b>	100 × 100 mm 200 × 100 mm 180 × 130 mm Special dimensions possible
<b>Test condition</b>	Dry cup: +23 °C, 0 to 50 % r.h. Wet cup: +23 °C, 50 to 93 % r.h. Special conditions available

## SPECIAL FEATURES

<b>Accredited by DAkkS D-PL-11140-11-02</b>	The laboratory has a flexible accreditation according to DIN EN ISO/IEC 17025 Test laboratory moisture, mortar, radiation, emissions
	Test reports can be issued

## MORE INFORMATION

The water vapor transmission of building materials is one of the most important characteristics to estimate moisture behavior of constructions. In particular prevention of condensation and the drying of constructions are controlled by the water vapor transmission properties.



# WATER ABSORPTION



<b>Measurement</b>	Capillary water absorption, a-value
<b>Standards</b>	DIN EN ISO 15148, DIN EN 1015-18, DIN EN 12087
<b>Measurement object</b>	Mineral materials like brick, lime stone, sandstone, concrete, plasters and renders, insulation materials, coatings, etc.

## TECHNICAL DATA

<b>Sample size, circular</b>	Diameter 90 mm, 100 mm, 200 mm
<b>Sample size, rectangular (L × W)</b>	100 × 100 mm 200 × 100 mm 180 × 130 mm
<b>Sample size, prism (L × W × H)</b>	40 × 40 × 40 mm
	Irregular surface areas are possible as well, minimum area 50 cm <sup>2</sup>

## SPECIAL FEATURES

<b>Accredited by DAkkS D-PL-11140-11-02</b>	The laboratory has a flexible accreditation according to DIN EN ISO/IEC 17025 Test laboratory moisture, mortar, radiation, emissions
	Test reports can be issued.

## MORE INFORMATION

- The water absorption coefficient is used to evaluate the capillary water uptake of building materials and an important data to estimate moisture protection of constructions.
- With the knowledge of the water absorption coefficient the calculation of the capillary transport coefficients for the water uptake is possible. These coefficients are used in simulations with WUFI®.

# MOISTURE STORAGE, SORPTION



<b>Measurement</b>	Water content in % by volume, % by weight
<b>Standard</b>	DIN EN ISO 12571
<b>Measurement object</b>	Brick, lime stone, sandstone, concrete, plasters and renders, insulation materials, wooden materials, etc.

## TECHNICAL DATA

<b>Sample size</b>	Any shape (bigger samples need more time to reach equilibrium)
<b>Test conditions at +23 °C</b>	50 % r.h. 65 % r.h. 80 % r.h. 93 % r.h. 97 % r.h. further conditions possible
<b>Test method</b>	Adsorption curve: equilibrium with increasing moisture content Desorption curve: equilibrium with decreasing moisture content

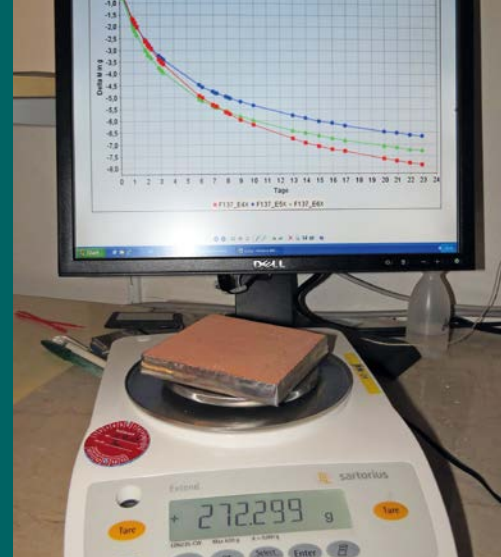
## SPECIAL FEATURES

<b>Accredited by DAkkS D-PL-11140-11-02</b>	The laboratory has a flexible accreditation according to DIN EN ISO/IEC 17025 Test laboratory moisture, mortar, radiation, emissions
	Test reports can be issued

## MORE INFORMATION

- Sorption of moisture means the exchange of water vapor between a material and the surrounding air until an equilibrium is reached.
- The sorption isotherm is used to determine the moisture storage function for a material specific WUFI® data set.

# DRYING CURVE, DRYING OUT



<b>Measurement</b>	Mass change per time unit
<b>Standard</b>	Own testing method
<b>Measurement object</b>	Brick, lime stone, sandstone, concrete, plasters and renders, insulation materials, wooden materials, etc.

## TECHNICAL DATA

<b>Sample size, circular</b>	Diameter 100 mm, 200 mm
<b>Sample size, rectangular (L x W)</b>	100 x 100 mm 200 x 100 mm
<b>Basic conditions</b>	Climate chamber +23 °C, 50 % r.h.

## SPECIAL FEATURES

<b>Accredited by DAkkS D-PL-11140-11-02</b>	The laboratory has a flexible accreditation according to DIN EN ISO/IEC 17025 Test laboratory moisture, mortar, radiation, emissions
	Test report can be issued

## MORE INFORMATION

- A test specimen is saturated with water by immersion in water. The saturated specimen is sealed on the sides with aluminium foil and if necessary insulated. Then the drying out over the top face is measured in the climate chamber at +23 °C and 50 % r.h. The measured drying curve can be divided in a first drying period, which only relates to the test conditions (temperature, moisture, air velocity) and a second period, which is material dependent.
- Simple method for determination of the transport coefficients for the drying to be used in WUFI® material data set.

# POROSITY, TRUE DENSITY



<b>Measurement</b>	Pore volume
<b>Standard</b>	DIN EN 1936
<b>Measurement object</b>	Porous materials like brick, lime stone, sandstone, concrete, plasters and renders, insulation materials, etc.

## TECHNICAL DATA

<b>Sample size</b>	Max. 1 cm <sup>3</sup>
<b>Apparatus</b>	Helium pycnometer AccuPyc II 1340 from Micromeritics

## SPECIAL FEATURES

<b>Accredited by DAkkS D-PL-11140-11-02</b>	The laboratory has a flexible accreditation according to DIN EN ISO/IEC 17025 Test laboratory moisture, mortar, radiation, emissions
	Test report can be issued

## MORE INFORMATION

- The true density of a material is defined as the mass of the dry material related to the volume of the solid matrix, which means minus the free accessible pore volume. The pore volume of the material sample is measured the helium pycnometer. Helium is a inert gas and has a very small diameter, though all accessible pores of the material can be reached.
- The porosity of a material can be calculated by knowing the bulk and true density.

# MOISTURE DISTRIBUTION, NMR



<b>Measurement</b>	Moisture distribution, moisture profile, penetration depth
<b>Measurement object</b>	Building materials, drilling core, insulation materials, etc.

## TECHNICAL DATA

<b>Sample size</b>	Prisms with a max. width of 50 mm Drilling cores with a max. diameter of 50 mm
<b>Apparatus</b>	NMR spectroscopy

## SPECIAL FEATURES

<b>Accredited by DAkkS D-PL-11140-11-02</b>	The laboratory has a flexible accreditation according to DIN EN ISO/IEC 17025 Test laboratory moisture, mortar, radiation, emissions
	Test reports can be issued

## MORE INFORMATION

- The contribution of weakly bounded protons in a material can be determined with this method. Therefore the moisture distribution at a certain time in materials or a combination of materials can be determined. Also the changes of the profiles, e.g., during a water uptake experiment or during a drying experiment, can be determined.
- The procedure can be used to determine the penetration depth of hydrophobic agents, impregnations or stone strengthening agents.

# CAPILLARY ACTIVITY OF INTERIOR INSULATION MATERIALS



<b>Measurement</b>	Moisture content, moisture distribution
<b>Standard</b>	Own testing method
<b>Measurement object</b>	Insulation materials, etc.

## TECHNICAL DATA

<b>Sample size</b>	Prisms with a max. width of 50 mm Drilling cores with a max. diameter of 50 mm
<b>Apparatus</b>	NMR spectroscopy
<b>Equipment</b>	Special experimental setup in the climate chamber

## SPECIAL FEATURES

<b>Accredited by DAkkS D-PL-11140-11-02</b>	The laboratory has a flexible accreditation according to DIN EN ISO/IEC 17025 Test laboratory moisture, mortar, radiation, emissions
	Test reports can be issued

## MORE INFORMATION

A sample of the insulation material with the dimensions 45 × 45 mm × material thickness is laterally sealed with an epoxy resin. The back side of the specimen is attached to a cooling device to manage a dew-point undercut. The front side is exposed to the climatic conditions in the climate chamber with +23 °C and 65 % r.h. This produces a gradient of temperature and partial pressure, and consequently vapor diffusion into the material. The adsorbed moisture is condensing at the sealed back side of the material, where it causes an increase of relative humidity; hence, the moisture content inside the material sample is rising. Due to the increasing gradient of relative humidity, a liquid transport back to the front of the material sets in. Eventually, the opposing moisture fluxes will reach a dynamic equilibrium. To reveal the hygrothermal behavior of the material samples during testing, two modes of measuring are taken. Through periodic gravimetric measurements, the moisture gain is analyzed and documented for the test period. The moisture distribution in the sample's cross-section is measured periodically by using nuclear magnetic resonance spectroscopy (NMR). The test results are reproduced by numerical simulation to determine and adapt the transport coefficients.

# TENSILE STRENGTH, E-MODULUS



<b>Measurement</b>	Force and elongation, e-modulus
<b>Standards</b>	DIN EN ISO 8339 (sealing material), DIN EN 12311 (elastomer film), DIN 53457 (plastics), EN 1607 (insulation materials)
<b>Measurement object</b>	Sealing materials, elastomer films, fibrous insulation materials

## TECHNICAL DATA

<b>Sample size</b>	Variable, depending on material
<b>Apparatus</b>	Zwick universal testing machine
	2 measuring ranges: up to 2 kN and up to 20 kN

## SPECIAL FEATURES

<b>Accredited by DAkkS D-PL-11140-11-02</b>	The laboratory has a flexible accreditation according to DIN EN ISO/IEC 17025 Test laboratory moisture, mortar, radiation, emissions
	Test reports can be issued

## MORE INFORMATION

- The stress-strain curve of different materials can be determined
- Durability and lifetime test of mechanical material properties after outdoor or artificial weathering



# AIR-CONDITIONED TEST HALL



<b>Measurement</b>	Total water content, driving rain load
<b>Standard</b>	Own testing method
<b>Measurement object</b>	Wall elements in air-conditioned test hall exposed at the exterior to natural climate conditions

## TECHNICAL DATA

<b>Sample size</b>	Wooden frame 50 × 50 cm, width: 20 cm or 40 cm
<b>Field investigation</b>	Wall with different composition
	Outdoor climate exposure to the west or east

## SPECIAL FEATURES

<b>Accredited by DAkkS D-PL-11140-11-02</b>	The laboratory has a flexible accreditation according to DIN EN ISO/IEC 17025 Test laboratory moisture, mortar, radiation, emissions
	Test reports can be issued
	The wall elements can be removed from the test hall façade with a fork lift and weighed. Changes in weight of the wall elements can be determined, which are in correlation with the total water content.

## MORE INFORMATION

Determination of moisture absorption or release to small-format wall elements, which are exposed to a controlled interior climate in the winter and to natural weathering on the outside. This method is meant to compare for example different external coatings or insulation systems. Moisture content, temperature profiles and heat fluxes can be measured.

# DURABILITY WITH DRIVING RAIN IMPACT



<b>Measurement</b>	Weathering, field experiments, durability
<b>Measurement object</b>	Whole wall segments on a building facing towards east or west

## TECHNICAL DATA

<b>Sample size</b>	Individual wall segments have a width of 1.20 m and height of 2.80 m
<b>Field test</b>	Installation of a wall construction in a test building
	Orientation to east and/or west
<b>Measured variables</b>	Weathering of fibrous insulation materials under natural conditions by: Determination of pull-off strength Determination of dirt collection Dilatation tests Protection against driving rain

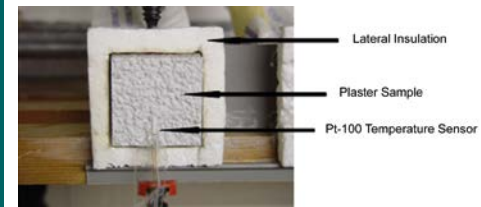
## SPECIAL FEATURES

<b>Accredited by DAkkS D-PL-11140-11-02</b>	The laboratory has a flexible accreditation according to DIN EN ISO/IEC 17025 Test laboratory moisture, mortar, radiation, emissions
	Test report can be issued

## MORE INFORMATION

At a test building on the test field whole wall segments can be torn down and reconstructed. The building is air-conditioned in winter to an indoor climate of +20°C and 50 % r.h. Test duration is at least a period of 6 month up to several years. Temperature and moisture measurements on the wall sequence can be used for validation of WUFI® simulations.

# DETERMINATION OF DEW WATER ON THE SURFACE



<b>Measurement</b>	Determination of dew water on the surface of exterior finishes caused by nocturnal long-wave radiation
<b>Standard</b>	Own testing method
<b>Measurement object</b>	Outside coatings like plaster or paint

## TECHNICAL DATA

<b>Sample size (H × W)</b>	50 × 50 mm
<b>Indoor climate</b>	+20 °C, 65 % r.h.
<b>Dew-point temperature undercut</b>	Typically 1.5 K

## SPECIAL FEATURES

- Determination of dew water on the surface by dabbing and weighing
- Dew-point temperature corresponding to the situation of outer walls in clear nights

## MORE INFORMATION

- Course of the surface water during a condensation period of several hours is decisive for the risk of microbial manifestation
- Typical testing time: 2 to 8 hours (without preparation)

# ACCELERATED TEST TO ASSESS THE MICROBIAL GROWTH RESISTANCE OF EXTERIOR FINISHES



<b>Measurement</b>	Sensitivity of coatings to microbial infestation
<b>Standard</b>	Own testing method
<b>Measurement object</b>	Outside coatings like plaster or paint

## TECHNICAL DATA

<b>Specimen size (H × W)</b>	Typically 100 × 100 mm
<b>Room volume</b>	Approx. 2 m <sup>3</sup>
<b>Entrance door (H × W)</b>	1.60 × 1.40 m
<b>Number of specimen</b>	Max. 70 (at 100 × 100 mm)

## SPECIAL FEATURES

- Acceleration of microbial growth with a factor of 10 or more
- Natural transient climatic conditions in a daily course
- Autumn climate with weekly rain
- Simulation of the nocturnal undercooling by backside cooling below dew-point temperature
- Inoculation with a cocktail of microbial primary coloniser

## MORE INFORMATION

- Left and right side separate individual undercooling possible
- Typical test time: 100 days

# FLEXIBLE TEST FACILITY FOR FLAT AND PITCHED ROOF



<b>Measurement object</b>	Pitched roof constructions with between and top rafter insulation or combinations: solutions for gableboard or eaves, solar systems
---------------------------	---

## TECHNICAL DATA

<b>Ground area</b>	42 m <sup>2</sup>
<b>Number of test rooms</b>	4 test rooms, thereof 2 northern-oriented and 2 southern-oriented
<b>Room volume/Floor area</b>	Per test room 6 m <sup>3</sup> room volume with 7.45 m <sup>2</sup> floor area
<b>Net test area (L × W)</b>	Pitched roof areas: each 2.5 × 2.5 m Fixed flat roof: 4.0 × 5.5 m

## SPECIAL FEATURES

<b>Flexible slope of the roof</b>	Adjustable between 22 and 50° with steps of 1° without replacing the roof construction
<b>HVAC</b>	Heating and ventilation system for floor and room heating, local humidification to enable daily moisture load profiles
<b>Measurement equipment</b>	Networked data logging, optionally external access, basic metrological equipment; upgrading depending on requirements possible using existing subdistribution panels

## MORE INFORMATION

Backfitting of a cooling system prepared

MEASUREMENT AND TEST RANGE

# INDOOR CLIMATE

## Contact

Head of Department Dr. Gunnar Grün | Phone +49 8024 643-228 | [gunnar.gruen@ibp.fraunhofer.de](mailto:gunnar.gruen@ibp.fraunhofer.de)



# CLIMATE-MEASURING SYSTEM DRESSMAN



<b>Measurement</b>	Equivalent temperature
<b>Standard</b>	DIN EN ISO 14505
<b>Measurement object</b>	Indoor environments, cabin compartments of aircrafts and vehicles, cockpit

## TECHNICAL DATA

<b>Equivalent temperature</b>	–10 up to +50 °C
<b>Air temperature</b>	–10 up to +60 °C
<b>Air velocity</b>	0 to 1 m/s and 0 to 10 m/s
<b>Supply voltage</b>	12 V

## SPECIAL FEATURES

<b>Optional sensors</b>	Prepared for integration of additional sensors measuring local air temperature and velocity
<b>Local climatic conditions</b>	Measurement of the environmental climatic conditions at up to 16 different body parts for assessment of overall thermal comfort

## MORE INFORMATION

- The equivalent temperature sensors are heated with a selected power output.
- Local effects of air temperature, air velocity and radiation are integrated into a single numerical value, which enables different climatic conditions to be compared and evaluated.
- Empirical studies yield good correlations between measured equivalent temperatures and the comfort assessment from test subjects.



# MEASUREMENT DEVICE FOR INDOOR ENVIRONMENTAL COMFORT COMPONENTS



<b>Measurement</b>	Air temperature, air velocity, air humidity, globe temperature, global solar radiation, carbon dioxide
<b>Standard</b>	DIN EN ISO 7730
<b>Measurement object</b>	Offices, conference and living rooms, automotive, aviation, rail-bound vehicles

## TECHNICAL DATA

<b>Air temperature</b>	-10 up to +60 °C
<b>Air velocity</b>	0 to 1 m/s, 0 to 5 m/s
<b>Air humidity</b>	5 to 98 % r.h.
<b>Globe temperature</b>	-10 up to +60 °C
<b>Global solar radiation</b>	0 to 1300 W/m <sup>2</sup>
<b>Carbon dioxide</b>	0 to 10 000 ppm

## SPECIAL FEATURE

<b>Measurements simultaneously</b>	Temperature measurement radiation shielded. Air temperature and air velocity at three heights, measuring heights between 0.1 and 1.8 m
------------------------------------	--

## MORE INFORMATION

- Measurement device on lockable rolls for sliding to different test sites
- Measurement device telescoping to 0,85 m for transport
- Data logger included

# PARTICLE IMAGE VELOCIMETRY (PIV)



<b>Measurement</b>	Time-varying flow field of a fluid
<b>Measurement object</b>	Air flow, buoyancy flow, convection, turbulence, flow around

## TECHNICAL DATA

<b>Nd:YAG double pulse laser</b>	Pulse energy	200 mJ at a wavelength of 532 nm
	Repetition rate	0 to 15 Hz with a pulse duration between 6 and 9 ns
	Beam diameter	6.5 mm
	Beam divergence	<3 mrad
<b>4 sCMOS cameras</b>	Resolution	2560 pixel × 2160 pixel
	Readout noise	<3 electrons (50 frames/s)
	Pixel size	6.5 μm × 6.5 μm
	Minimum image distance	2 μs
<b>Evaluation system</b>	Workstation with 2x Quad Core with 1.8 TB of storage and 12 GB of memory, including special software for parallel computing on NVIDIA graphics cards	

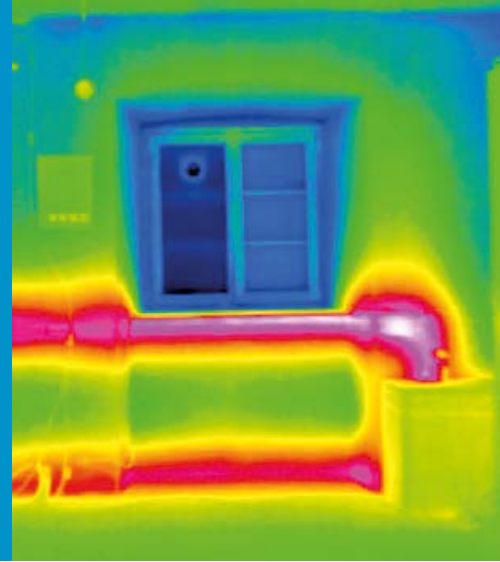
## SPECIAL FEATURES

<b>Tomographic PIV</b>	Enhancements for measurement of 3D velocity fields in a maximum volume of 0.64 dm <sup>3</sup> (requires 3 or 4 cameras)
<b>Particle Tracking Velocimetry (PTV)</b>	Conversion to methods for tracking particles through a fluid in the measuring area

## MORE INFORMATION

- Any additional devices: helium bubble generator, compressed air bottle to spray (for seeding) to operate, 5 tripods, each 4 wide-angle and macro lenses, 4 Scheimpflug adapters, 5 goggles, light sheet optics for laser
- Seeding: di-ethyl-hexyl-sebacate (DEHS) or helium bubbles
- Black theatrical material with high absorption and protection available to blackout

# INFRARED THERMOGRAPHY



<b>Measurement</b>	Infrared radiation 7.5 to 14 $\mu\text{m}$ wave length
<b>Standards</b>	DIN 54190, DIN EN 13187
<b>Measurement object</b>	Building envelopes: outer and inner walls of commercial and residential buildings, particularly historic buildings Building services: heating and cooling equipment in buildings, particularly museums, and their local effects on adjacent building elements or works of art

## TECHNICAL DATA

<b>Detector size</b>	600 $\times$ 480 infrared pixel
<b>Thermal sensitivity</b>	0.030 Kelvin at +23 $^{\circ}\text{C}$ (low noise detector)
<b>Measurement and accuracy</b>	Infrared spectrum 7.5 to 14 $\mu\text{m}$ wave length at $\pm 1.5$ Kelvin and $\pm 2$ % of measurement reading
<b>Wide-angle lens 12,5 mm</b>	65 $\times$ 51 $^{\circ}$ (complete walls indoors, even in small rooms)
<b>Telephoto lens 50 mm</b>	18 $\times$ 14 $^{\circ}$

## SOFTWARE

<b>HighEnd Software IRBIS plus</b>	Editing of digital thermogram with several editing functions, e.g., temperature profiles along any lines and across any measured areas
<b>Image and data export</b>	Temperatures for each measuring point (pixel)
<b>Emissivity coefficient</b>	Different emissivity coefficients are adjustable
<b>AVI generator</b>	Set up of video sequences in real-time or in time scheduled sequences

# INDOOR CLIMATE MONITORING AND CONTROL IN FOUR HISTORIC ROOMS



<b>Measurement</b>	Air temperature, globe temperature, relative humidity, surface temperature, heat flux, heating water flow rate, electric power, air velocity
<b>Standards</b>	DIN EN 60751, DIN EN ISO 7726
<b>Measurement object</b>	Four historic rooms in the Alte Schöfflerei Benediktbeuern Monastery
<b>Aim</b>	Examination and comparison of different heating systems in combination with internal and external wall insulation

## MONITORING OF TEMPERATURE, RELATIVE HUMIDITY AND HEAT TRANSPORT

<b>Air temperature</b>	In 10, 60, 110, 170 and 255 cm height above ground with radiation blocked PT 100 sensors
<b>Surface temperature</b>	On all walls in 0, 10, 170, 255 and 260 cm height above ground as well as on floor and roof in the room center
<b>Globe temperature</b>	In the center of the room in 170 cm height
<b>Relative humidity</b>	In the center of the room in 170 cm height
<b>Heat flux</b>	On the outer walls in 170 cm height

## CONTROL OF TEMPERATURE, RELATIVE HUMIDITY AND AIR EXCHANGE

<b>Measurements</b>	PT 100, capacitive r.h. sensor, anemometer, heat flux
<b>Control system</b>	DESIGO™
<b>Control variables</b>	Supply water temperature and water flow rate, air dehumidification and humidification, air supply flow, electric power

MEASUREMENT AND TEST RANGE

# HEAT TECHNOLOGY, LIGHTING TECHNOLOGY

Contact

Head of Department Hans Erhorn | Phone +49 711 970-3380 | [hans.erhorn@ibp.fraunhofer.de](mailto:hans.erhorn@ibp.fraunhofer.de)



# "IN-SITU" MEASUREMENT OF PHOTOMETRIC CHARACTERISTICS OF STREET PAVEMENT



<b>Measurement</b>	Reflection characteristic of street pavement: Level of mirroring $S$ , mirroring factor $\kappa_p$ and luminance coefficients $q_0$ , $q_d$ thereby classification of the R class and C class
<b>Standards</b>	DIN EN 13201, CIE 144:2001
<b>Measurement object</b>	Measurement of street pavement layers on site

## TECHNICAL DATA

<b>Light source</b>	Actively controllable luminance screen to provide the necessary diffuse and direct light components
<b>Sensor system</b>	Luminance meter grade A
<b>Measuring angle</b>	Measuring the street pavement at $1^\circ$ and $2.29^\circ$

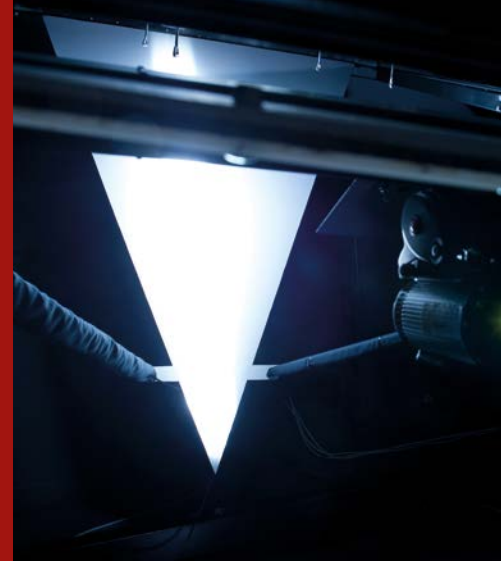
## SPECIAL FEATURES

<b>On-site measurement</b>	On-site measurement of built in street pavement avoiding core abstractions and artificial aging of samples
<b>Time-efficient measurement</b>	Compact, lightweight device Automatic control of the measurement

## MORE INFORMATION

IBP Research News 36 (2009), Nr. 494

# LIGHT TRANSMISSION AND REFLECTION OF FAÇADES



<b>Measurement</b>	Directed-directional light transmission and light reflectance (luminance coefficients, BRTDF), directional-hemispherical light transmittance and reflectance
<b>Standards</b>	DIN EN 410, DIN EN 13363, DIN EN 14500, DIN EN 14501, DIN V 18599-4
<b>Measurement object</b>	Glass, Complex Fenestration Systems (CFS) like functional glass types (e.g. printed glass, glass for light control), blinds, textile sun protection, glass-sun protection composites, systems for skylights

## TECHNICAL DATA

<b>Light source</b>	D65 spectrum, opening angle 0.34° Exposure to sample: elevation angle of 0° up to 84° Azimuth angle: 0 to 360°
<b>Sensor system</b>	Spatially resolved measurements by luminance camera (2°) Monochromatic, 3 color channels, circadian action spectrum $c(\lambda)$
<b>Sample size (L × W × H)</b>	1.23 × 1.48 × 0.30 m

## SPECIAL FEATURES

<b>Automatic sample positioning</b>	Highly automated measuring device. Inter alia louvre angle of blinds can be set automatically.
<b>Further use of the data in planning</b>	Software-based data analysis. The recorded data may inter alia directly be used in light simulation programs such as DIALux to evaluate the façades photometrically and energetically.

## MORE INFORMATION

IBP Research News 36 (2009), Nr. 499

# ARTIFICIAL SUN FOR DAY-LIGHTING EVALUATION OF BUILDING MODELS



<b>Measurement</b>	Exposition and shading studies of buildings and settlement models, daylight system evaluation and optimization
<b>Standard</b>	DIN 5034
<b>Measurement object</b>	Models of buildings or settlements

## TECHNICAL DATA

<b>Light source</b>	85 halogen spotlights
<b>Model table</b>	Diameter 1.20 m; distance to specimen 6 m, gimbal mounted

## SPECIAL FEATURES

<b>Direct radiation</b>	Narrow beam of lamps and filtering with honeycomb material lead to an almost parallel insolation on the model table (2° angle).
<b>Automatic control</b>	Software-based control of the relative angle of the model to the artificial sun to set any positions of the sun and diurnal cycles

## MORE INFORMATION

IBP Research News 20 (1993), Nr. 237



# ARTIFICIAL SKY FOR DAY-LIGHTING EVALUATION OF BUILDING MODELS



<b>Measurement</b>	Illuminance distributions in building models, daylight factor measurement according to DIN 5034, daylight system evaluation and optimization
<b>Standard</b>	DIN 5034
<b>Measurement object</b>	Models of buildings

## TECHNICAL DATA

<b>Light source</b>	85 hemispherically over a model plane placed halogen lamps with 38° beam angle
<b>Measurement</b>	Illuminance in the interior of models and outside the model with miniature photometers. From this e.g. determination of the daylight factor

## SPECIAL FEATURE

<b>Desired luminance distributions</b>	All spotlights are individually dimmable, so that different luminance distributions of the covered and clear sky can be set.
--	--

## MORE INFORMATION

IBP Research News 20 (1993), Nr. 237

# ARTIFICIAL WINDOW FOR A DETAILED ANALYSIS OF DAYLIGHT CONDITIONS



<b>Measurement</b>	Weather-independent investigation of daylight conditions in interior spaces, precisely controllable interaction between artificial and natural light for studies on user behavior and performance (e.g. at computer workstations), focused studies of light management systems such as daylight-responsive light control, specific tests of sun and glare protection systems under controlled conditions, studies on novel approaches such as artificial windows
<b>Measurement object</b>	Test group studies, computer workstations, light management systems, sun and glare protection systems, novel approaches such as artificial windows

## TECHNICAL DATA

<b>Light field</b>	108 spotlights on 3 × 4 m, mobile in front of façade
<b>Lamp power</b>	30 kW in total, fully dimmable, electronically and by mechanical shutter
<b>Direct light</b>	Altitude angle: 0° to 60° Façade azimuth: -60° to +60°
<b>Diffuse light</b>	Luminance up to 10 000 cd/m <sup>2</sup>
<b>Color temperature</b>	2500 K to 9300 K

## SPECIAL FEATURES

<b>View out</b>	Interchangeable scene foil
<b>Light scenes</b>	Computer-controlled, for example daily and annual cycles, alternating between direct and diffuse light. Variable luminance distributions on the façade
<b>Connected laboratory</b>	Highly flexible artificial lighting system with daylight-dependent light management. Integration into laboratory concept which makes integral indoor climate, lighting and acoustic investigations possible

# LIGHT LABORATORIES FOR EXPERIMENTAL STUDIES ON THE PHYSIOLOGICAL AND PSYCHOLOGICAL EFFECTS OF LIGHT



<b>Measurement</b>	Performance and user acceptance studies on the physiological and psychological effects of light, testing new lighting concepts, such as context-sensitive lighting, integral investigations of indoor climate, lighting and acoustics
<b>Measurement object</b>	Test group studies, computer workstations, light management systems, lighting systems

## TECHNICAL DATA

<b>Lighting system</b>	Efficient LED lighting of the entire room, subdivided into several separately controllable zones Algorithm-supported choice of the color point or color of light taking the color rendering into account
<b>Illuminance</b>	Up to 2000 lux, directly and indirectly
<b>Color of light</b>	RGB saturated colors or white from 2000 K to over 15,000 K, CRI 90 at white light

## SPECIAL FEATURES

<b>Light control</b>	Real-time consideration of numerous user-related factors (position in space, direction of view, activity, age, preferences) and environmental variables (daylight, time of day)
<b>Interfaces</b>	PC software for lighting control, as well as gesture and voice control. Sensors for the detection of selected user-related factors.
<b>Conditioning of laboratory</b>	Embedded in a laboratory concept which enables researchers to perform integral investigations of indoor climate, lighting and acoustics.

# VIRTUAL WINDOW FOR WINDOWLESS INTERIORS



<b>Measurement</b>	Psychological studies on the effect of light in windowless environments
<b>Measurement object</b>	Test group studies (e.g. performance tests)

## TECHNICAL DATA

<b>Size</b>	3 screens, each with 165 cm (65") diagonal
<b>Resolution</b>	3240 pixel × 1920 pixel
<b>Brightness</b>	Up to 500 cd/m <sup>2</sup>
<b>Mappable viewing angle</b>	160°
<b>Footage</b>	Motifs with 15 447 pixel × 9154 pixel, any images and videos
<b>Position tracking</b>	IR depth image sensor, capturing the viewpoint and the view direction relative to the virtual window

## SPECIAL FEATURES

<b>Image projection</b>	Automatic adjustment of the image, taking the viewpoint and view direction into account
<b>Twin rooms</b>	Next to the room with virtual window is a identical twin room, but with a real window. By directly uploading the outside world to the virtual window real and virtual situations can be directly compared with each other.

# EYE TRACKING GLASSES FOR AN ANALYSIS OF VISUAL BEHAVIOR



<b>Measurement</b>	Binocular eye tracking data, capturing the eye movements to study cognitive and decision making factors
<b>Measurement object</b>	Consumer behavior, social interactions

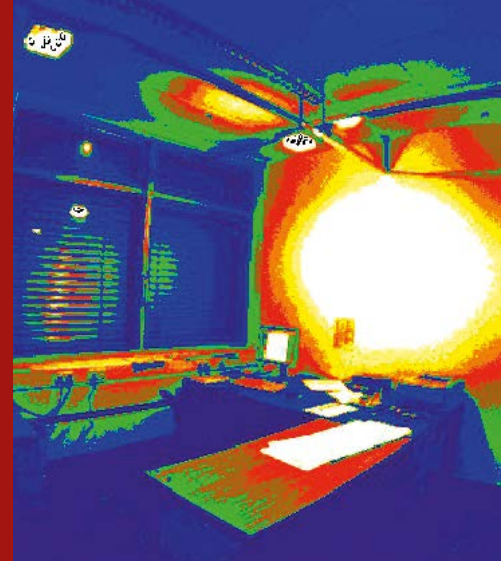
## TECHNICAL DATA

<b>Eye tracking principle</b>	Binocular eye tracking with automatic parallax compensation
<b>Temporal resolution</b>	60 Hz
<b>Gaze tracking range</b>	80° horizontal, 60° vertical
<b>HD scene camera</b>	Resolution: 1280 pixel × 960 pixel at 24 frames per second (fps); 960 pixel × 720 pixel at 30 fps, video format: H.264, field of view: 60° horizontal, 46° vertical
<b>Human interface design</b>	Noninvasive video-based glasses-type eye tracker
<b>Gaze position accuracy</b>	0,5° over all distances, parallax compensation

## SPECIAL FEATURES

<b>Eyewear compatibility</b>	Works with contact lenses
<b>Audio</b>	Integrated microphone
<b>Real-time capturing</b>	Online scene video with gaze position, pupil diameter/position, tracking status, eye image online interfacing via SDK
<b>Calibration</b>	Instant calibration with fully mobile use
<b>Analysis</b>	Quantification and visualization of eye tracking data using specific software

# LUMINANCE MEASURING CAMERA FOR A SPATIALLY RESOLVED ANALYSIS OF LUMINANCE DISTRIBUTIONS



<b>Measurement</b>	Spatial luminance distribution of indoor and outdoor environments, photometric image analysis
<b>Standard</b>	DIN 5032
<b>Measurement object</b>	Luminous and illuminated surfaces covering a wide range of visual environments from VDT to daylight situations

## TECHNICAL DATA

<b>Camera</b>	1.4 megapixel CCD detector, photopic spectral correction
<b>Typical luminance range</b>	0.015 to 50,000 cd/m <sup>2</sup> (with filter up to $5 \times 10^9$ cd/m <sup>2</sup> )
<b>Lenses</b>	Wide angle, fish eye

## SPECIAL FEATURES

<b>Filter</b>	Neutral density filter with transmission of 1 and 0.01 % to raise the maximum measurable luminance
<b>Analysis</b>	Using the software luminance values can be measured over a series of measuring points or as complete surfaces.



# MEASUREMENTS IN LABORATORIES

Absorbance	83
Absorption	86
Aging	75, 84
Air-conditioned storing	75
Air permeability	69
Air velocity	104, 107
Alternating climate loads	74
a-value	90
Bending stress	80
Bond strength	80
Capillary water absorption	90
Cavity convection	74
Chalking	87
Chemical composition	58
Color rendering index	64
Comparative measurements of different building and heating systems	62, 66
Compressive strength	47
Compressive stress	80
Concentrations of VOCs indoors	50
Condensation	74
Cyclic loading	80
Daylight	60, 61, 63, 86, 111, 112, 113
Day/night simulation	74
Determination of the energetic and visual performance	63
Determination of odor emissions from building products using test chambers	51
Determination of sum parameters and individual substances	52
Determination of amorphous phase by internal or external standards	57
Diffuse reflectance	64
Displacement (vibrations)	35
Durability	54, 60, 73, 75, 98
Dynamic stiffness	33
Effect of light	115
Efficacy of biocidal equipped coatings	42
Elemental analysis	58
Elongation	96
Embrittlement	87
Emissivity	65, 87

E-modulus	36, 48, 80, 96
Energetic performance	61, 63
Energy efficiency	60
Enthalpy of fusion and crystallization	55
Equivalent thermal conductivities	77
Equivalent temperature	103
Evaluation of solar simulation equipment	86
Exposition	111
Eye tracking	116
Fading	87
Field experiment	98
Fitness for purpose	84
Flanking impact sound level	15
Flanking level difference	15, 22, 26, 27
Flanking sound transmission	11
Flexural strength	46
Flow noise	30
Fogging	84
Force	96
Freeze-thaw resistance	75
Geometry	87
Glass transition temperature	55, 56
Hardness	87
Heat dissipation	78
Heat flow/flux	77, 107
Humidity	74, 75, 104, 107
Humidity penetration	74
HVAC analyses	73
Illuminance distributions	112
Impact sound insulation	18, 24
Impact sound level	15
Infestation by microorganisms	43
Infrared radiation	106
Insertion loss	32, 40
Integral irradiance	86
Integral investigations of indoor climate, lighting and acoustics	114
Investigation of daylight conditions	113



Light- and solar direct reflectance	64
Lighting concepts	114
Linear thermal transmittance $\psi$	77
Localization of sound source	28, 31
Loss factor	36
Mass change per time unit	92
Melting point and crystallization temperature	55
Microbial susceptibility	54
Mirroring $S$ , mirroring factor $\kappa_p$ and luminance coefficients $q_o, q_d$	109
Modal analysis	35
Moisture content	95
Moisture distribution	94, 95
Moisture profile	94
Moisture proofing	73
Nail tensile test	80
Noise (level) of water installations	19, 21
Noise (level) of water tabs and water supply valves	20
Normalized flanking impact sound level	15
Normalized flanking level difference	15, 22, 26, 27
Optical technical parameters	83
Penetration depth	94
Performance	38, 60, 61, 63, 113, 114
Phase analysis, qualitative and quantitative	57
Physiological and psychological effects of light	114
Photo-catalytic efficacy of a correspondingly equipped coating formulation	44
Photometric image analysis	117
Protection against heat and against cold	73
Pore volume	93
Pressure loss	32
Quality of thermal and visual comfort	60
Radiation	34, 83, 86, 88, 104, 106
Rain noise level	23
Rain load	97
Rain simulation	73
Reflectance	64, 82, 83, 110
Reflection	86
Relative humidity changes	75

Release of compounds	53
Resistance to wind load	71
Sensory testing of indoor air	51
Shading	111
Shear strength	80
Solar direct absorptance	64
Solar heat gain coefficient (SHGC), g-value	79, 84
Solar Reflectance Index (SRI)	82
Sound absorption coefficient	9, 10
Sound attenuation	39
Sound impact	38
Sound insulation	11, 12, 13, 14, 16, 17, 18, 24, 25
Sound intensity	28, 31, 34
Sound power	28, 29, 30, 31, 32, 34, 40
Sound quality	38
Spatial luminance distribution	117
Spatial luminance distribution	117
Spectral analysis of daylight	86
Specific heat	55
Spontaneous failure	84
Storage properties of building components	74
Strength	46, 47, 80, 87
Substance release from construction products into water	51, 52
Sun simulation	73
Survey of airborne germs of indoor air	45
Temperature	55, 56, 75, 77, 84, 88, 103, 104, 107
Temperature changes	75
Thermal bridges	74
Thermal conductivity $\lambda$	68, 74, 76
Thermal emission coefficient	81
Thermal emissivity	58
Thermal expansion coefficient	56, 84
Thermal load tests	84
Thermal performance	61
Thermal resistance R	68, 72, 77
Thermal reflection coefficient	81
Thermal transmittance U (U-value)	68, 72, 74, 77, 85

Time-varying flow field of a fluid	105
Total solar energy transmittance (solar factor)	64
Total water content	97
T-peel test	80
Transmission	86
Transmittance	64, 83, 87, 110
U-Value (thermal transmittance U)	68, 72, 74, 77, 85
UV-, light- and solar direct transmittance	64
Vapor diffusion processes	74
Vibration analysis	35
Vibration transmission index	27
Vibration velocity	35
Visual performance	63
VOC concentration	49, 50
Water content	91, 97
Water tightness against driving rain	70
Water vapor resistance factor	89
Wavelength-dependent irradiance	86
Weathering experiments	53, 54, 98
Weather proofing	73
Yellowing	87



## MEASUREMENT OBJECTS

Absorber elements	74
Additional linings	14, 27
Adhesive tapes	69, 70, 71
Adhesions	80
Air-conditioning components	32
Air-conditioning systems	29, 28, 31, 37
Air flow	105
Air terminals	15, 22, 29
Air-tightness-layers	80
Air-to-water heat pumps	66
Asphalt	80, 82
Autoclaved aerated concrete	46, 47, 48
Bath tubs	21
Blinds	69, 70, 71, 74, 110
Brick	68, 89, 90, 91, 92, 93
Building boards	83
Building components	73, 74, 75, 79, 83, 84, 86
Building integrated photovoltaics (PV)	60, 61
Building materials	57, 75, 80, 82, 83, 94
Building panels	81
Building services	34, 106
Bulk materials	58
Buoyancy flow	105
Cabin compartments of aircrafts and vehicles	103
Carpets	18
Cavities	15, 74, 77
Cavity floors	15
Ceilings	9, 10, 22, 73
Cements	57
Ceramics	57
Class rooms	50
Coating	42, 44, 53, 64, 65, 87, 90, 99, 100
Component and control concepts	62, 66
Components	26, 30, 32, 34, 35, 40, 55, 56, 60, 61, 68, 73, 74, 75, 79, 83, 84, 86, 87, 88
Components for the renovation of building elements	73
Components of exhaust gas systems	40

Components of ventilation systems	26
Components with thermal bridges	73
Composite constructions with thermal bridges	74
Computer workstations	113, 114
Concrete	46, 47, 48, 57, 64, 65, 80, 81, 82, 83, 89, 90, 91, 92, 93
Concrete surface	64, 65
Construction products	49, 51, 52
Consumer behavior	116
Control concepts	62, 66
Convection	74, 105
Curtain walls façades	69, 70, 71
Daylight redirection systems	60, 61, 63
Demand-based ventilation systems	62
Design of insulation materials	73
Dome lights	23
Domed building components	79
Door elements	74
Door leaves	13
Doors	13, 17, 69, 70, 71, 72, 73
Double skin façades	60, 61, 63
Drilling core	94
Elastomers	36, 87, 96
Elements	11, 12, 13, 17, 23, 30, 63, 68, 69, 70, 71, 72, 73, 74, 77, 84, 97, 106
Equipment	20, 28, 29, 31, 34, 35, 37, 74, 88, 106
Equipment for ventilation	74
Exhaust systems	26, 40, 88
External thermal insulation composite systems	27
Fabric	9, 10, 64, 65, 79
Façade elements	11, 17, 30, 53, 72, 73, 74, 77
Façade components	84, 87
Façade integrated HVAC components	60, 61
Façade coatings	53
Façades	11, 14, 17, 30, 53, 60, 61, 63, 69, 70, 71, 72, 73, 74, 77, 81, 82, 84, 86, 88
Fans	30

Fibre reinforced concrete	46, 47, 48
Films	81, 87, 96
Filters	20, 30, 32, 58
Fireplaces	88
Fixing elements	77
Flat roof systems	73
Floating floors	18, 24, 33
Floor constructions	24, 25
Floor coverings	18, 24, 25, 33, 78, 81
Floor structures	78
Floors	15, 18, 24, 25, 33, 78, 81
Flow around	105
Foamed materials	36
Foils	64, 65, 69, 70, 71
Frame profiles	77
Fresh water filters	20
Front-wall installations	19, 21
Functional layers	81
Furniture	9
Gabions	11
Gates	17, 69, 70, 71
Glare protection	60, 61, 63, 64, 65, 113
Gaskets	87
Glass	16, 55, 56, 60, 61, 63, 64, 65, 77, 78, 81, 83, 87, 110
Glass edge bond	77
Glass façades	60, 61, 63
Glass walls	16
Glazing (switchable)	60
Glazing elements	68, 69, 70, 71
Glazing façades	86
Glazings	17, 79, 85
Granular materials	10
Gratings	30
Heat exchangers	30, 32
Heat recovery installations	74
Heating equipment	106
Historic rooms	107

Homogenous plates	68
HVAC (general) components	30, 60, 61
Indoor air	45, 51
Indoor environments	103
Industrial floor coverings	78
Inhomogeneous test specimens	68
Insulation materials	73, 80, 81, 89, 90, 91, 92, 93, 94, 95, 96
Insulation systems	62, 66
Installation walls	19
Intelligent control concepts in smart grids	62
Internal thermal insulation composite systems	27
In-wall installations	19
Irrigates construction products for outdoor use	51
IR-reflecting films	81
Joint sealings	12, 13
Kindergartens	50
Laminate floors	18
Layers	30, 33, 80, 81, 82, 83, 109
Light bands	61, 63
Light management systems	113, 114
Light sources	86
Lighting systems	114
Lime stone	89, 90, 91, 92, 93
Liquids	58
Machinery	28, 29, 31, 34, 35, 37
Masonry	77
Masonry units	77
Materials	10, 33, 36, 43, 52, 55, 56, 57, 58, 66, 68, 73, 75, 80, 81, 82, 83, 89, 90, 91, 92, 93, 94, 95, 96
Membrane elements	63
Membranes	23, 53, 63, 64, 65, 79
Metal	22, 60, 61, 63, 64, 65, 83
Metal façades	60, 61, 63
Mineral materials	89, 90
Minerals	57, 83, 89, 90
Models of buildings or settlements	111, 112
Moisture retention	88

Mortars	46, 47, 52, 57
Movable walls	16
Multi-layer building components	74
Museums	106
Noise barriers	9, 11, 16, 39
Nursery schools	50
Office screens	9
Offices	50, 104
Paint	42, 44, 52, 64, 65, 81, 82, 83, 87, 99, 100
Panels	9, 10, 12, 13, 17, 35, 81
Photovoltaics (PV)	60, 61, 84
Pipe clamps	21
Pipe insulations	21, 76
Plaster	42, 44, 52, 64, 65, 88, 89, 90, 91, 92, 93, 99, 100
Plastics	80, 83, 87
Polyester resin sheets	78
Prefabricated house elements	73, 74
Porous materials	93
Profiles	68, 72, 77
Profile plates	68
Powders, pressed and loose	58
Radiators	62
Rain noise reduction systems	23
Raised floor	15
Renders	89, 90, 91, 92, 93
Residential rooms	50, 51
Rocks	57
Roller shutter casings	72
Roof components	84
Roof constructions	23, 25, 73, 101
Roof elements	23, 53, 69, 70, 71, 72, 74, 77
Roof lights	79
Roof linings	87
Roofing material	52
Roofing underlays or coverings	80, 81
Roofs	14, 23, 25, 62, 66, 82, 88
Room concepts	60



Sandstone	89, 90, 91, 92, 93
Sandwich constructions	73
Sanitary equipment	21
Screen printing	79
Sealants	87
Sealing compounds	36
Sealing materials	96
Seats	9
Sections of building bricks	68
Shower systems	21
Shutter boxes	77
Shutter systems	73
Shutters	12, 74
Silencers	32, 40
Silicone (sealing compounds)	36
Skylights	23, 63, 72, 73, 110
Slag	57
Social interactions	116
Solar thermal absorbers	61
Solar simulation facilities	86
Solids	58
Sound absorbers	9, 10
Spacers of laminated insulation glazing units	77
Special designed specimen	42, 43, 44, 54
Splitter silencers (special silencers)	32
Street pavement	109
Suspended ceilings	9, 10, 22
Sun shade	64, 65
Sun protection systems	60, 62, 63, 66, 110, 113
Sun protection or shading facilities	84
Supply lines	88
Surfaces	81, 88, 117
Synthetic	64, 65
Technical building equipment	88
Test group studies	113, 114, 115
Textiles	9, 10, 80
Thermal bridging	88

Thermal insulation	27, 74, 75, 85
Three-dimensional fabrics	79
Throttles	30
Tools	35
Transparent specimens	79
Turbulence	105
Underfloor heating systems	62, 66
Varnishes	42, 44, 81, 82, 83
Vehicles	88, 103, 104
Ventilation ducts	26
Ventilation elements	12, 13
Ventilation shafts	26
Ventilation systems	26, 28, 31, 62
Ventilated façades	60, 61
Wall elements	69, 70, 71, 97, 98
Wall junctions	27
Wall linings	9, 10
Walls	9, 10, 14, 16, 19, 21, 27, 54, 62, 66, 69, 70, 71, 72, 73, 86, 97, 98, 106, 107
Waste water systems	21
Water installations	20, 21
Water softening systems	20
Water taps, water supply valves	20
Windows	12, 17, 62, 66, 69, 70, 71, 72, 73, 74, 77, 113
Window elements	74
Window profiles	77
Wood, wooden materials	91, 92



# STANDARDS

ASTM D 3424	87
ASTM D 4329	87
ASTM D 4587	87
ASTM D 4799	87
ASTM D 5071	87
ASTM D 5208	87
ASTM D 6695	87
ASTM E 96-95	89
ASTM E 903	82, 83
ASTM E 927	86
ASTM E 1918	82
ASTM E 1980	82
ASTM G 151	87
ASTM G 154	87
ASTM G 155	87
CIE 144:2001	109
CIE 1931	86
CIE 1964	86
DIN 1048-5	48
DIN 1931	89
DIN 38047-35	53
DIN 38404-5	53
DIN 4109	19, 21
DIN 5032	117
DIN 5033	64
DIN 5034	111, 112
DIN 6169	64
DIN 12390-5	46
DIN 29052	33
DIN 52210	26
DIN 52612	68
DIN 52614 (withdrawn)	78
DIN 53122-1	89
DIN 53457	96
DIN 54190	88, 106
DIN CEN/TS 16516	49
DIN EN 196-1	46, 47

DIN EN 410	64, 79, 82, 83, 84, 86, 110
DIN EN 673	65, 81, 85
DIN EN 674	68, 85
DIN EN 675	85
DIN EN 679	47
DIN EN 772-1	47
DIN EN 771-4	47
DIN EN 826	80
DIN EN 927-6	87
DIN EN 1015-18	90
DIN EN 1026	69
DIN EN 1027	70
DIN EN 1221	71
DIN EN 1297	87
DIN EN 1351	46
DIN EN 1352	48
DIN EN 1484	53
DIN EN 1793-2	16
DIN EN 1898	87
DIN EN 1936	93
DIN EN 4892	84
DIN EN 12086	89
DIN EN 12087	90
DIN EN 12091	75
DIN EN 12114	69
DIN EN 12152	69
DIN EN 12153	69
DIN EN 12154	70
DIN EN 12155	70
DIN EN 12179	71
DIN EN 12207	69
DIN EN 12208	70
DIN EN 12211	71
DIN EN 12224	87
DIN EN 12310-1	80
DIN EN 12311	96
DIN EN 12412-2	72

DIN EN 12412-4	72
DIN EN 12424	71
DIN EN 12425	70
DIN EN 12426	69
DIN EN 12427	69
DIN EN 12444	71
DIN EN 12489	70
DIN EN 12543-4	87
DIN EN 12664	68
DIN EN 12667	68
DIN EN 12835	69
DIN EN 12865	70
DIN EN 12898	65, 81
DIN EN 13141	69
DIN EN 13163	80
DIN EN 13166	71
DIN EN 13187	88, 106
DIN EN 13201	109
DIN EN 13363	64, 110
DIN EN 13363-2	79, 83, 84
DIN EN 13523-10	87
DIN EN 13791	47
DIN EN 14366	21
DIN EN 14500	110
DIN EN 14501	110
DIN EN 15457:2007-10 (D)	42
DIN EN 15458:2007-10 (D)	42
DIN EN 16012 (attachment D), alternative method for DIN EN 12898 and DIN EN 673	81
DIN EN 16105	52
DIN EN 16691	53
DIN EN 27888	53
DIN EN 60751	107
DIN EN 75220	87
DIN EN ISO 140	23
DIN EN ISO 140-5	11
DIN EN ISO 354	9
DIN EN ISO 3741	29

DIN EN ISO 3744	28
DIN EN ISO 3745	28, 31
DIN EN ISO 3822	20
DIN EN ISO 4892-1	87
DIN EN ISO 4892-2	87
DIN EN ISO 4892-3	87
DIN EN ISO 7235	30, 32, 40
DIN EN ISO 7726	107
DIN EN ISO 7730	104
DIN EN ISO 7783-2	89
DIN EN ISO 8339	96
DIN EN ISO 8497	76
DIN EN ISO 8990	72
DIN EN ISO 10052	19, 21
DIN EN ISO 10077	77
DIN EN ISO 10140	12, 13, 14, 16, 17, 18, 24, 25
DIN EN ISO 10211	77
DIN EN ISO 10301	53
DIN EN ISO 10304	53
DIN EN ISO 10534	10
DIN EN ISO 10848	11
DIN EN ISO 10848-2	15, 22, 27
DIN EN ISO 10848-3	27
DIN EN ISO 11339	80
DIN EN ISO 11357-1	55
DIN EN ISO 11357-2	55
DIN EN ISO 11357-3	55
DIN EN ISO 11357-4	55
DIN EN ISO 11507	87
DIN EN ISO 11895	87
DIN EN ISO 11997-2	87
DIN EN ISO 12567-1	72
DIN EN ISO 12567-2	72
DIN EN ISO 12571	91
DIN EN ISO 12572	89
DIN EN ISO 14505	103
DIN EN ISO 14911	53

DIN EN ISO 15148	90
DIN EN ISO 16000-2	50
DIN EN ISO 16000-5	50
DIN EN ISO 16000-9	49
DIN EN ISO 17294-2	53
DIN ISO 16000-16	45
DIN ISO 16000-17	45
DIN ISO 16000-18	45
DIN ISO 16000-19	45
DIN ISO 16000-28	51
DIN ISO 16000-3	49, 50
DIN ISO 16000-30	51
DIN ISO 16000-6	49, 50
DIN V 18599-4	110
Draft standard (Dynamic Surface Leaching Test) according to FprCEN/TS 16637-2	52
EN 1607	96
EN 14303	76
EN 14305	76
EN 14313	76
EN ISO 13791	61
IEC 60904	86
ISO 6721-4	36
ISO 11359-1	56
ISO 11359-2	56
ISO 16832	38
ISO 18434-1	88
ISO/TS 15666	38
LEED	82
Own testing method	43, 44, 53, 54, 92, 95, 97, 99, 100
prEN 1062-4	87
SAE J 2020	87
SIA 181	19, 21
VDI 4100	19, 21
VDI 4300-10	45









#### **ACOUSTICS**

Prof. Dr.-Ing. Philip Leistner  
Head of Department  
Phone +49 711 970-3346  
Fax +49 711 970-3406  
philip.leistner@ibp.fraunhofer.de

#### **BUILDING CHEMISTRY, BUILDING BIOLOGY, HYGIENE**

Dr. rer. nat. Florian Mayer  
Head of Department  
Phone +49 8024 643-238  
Fax +49 8024 643-366  
florian.mayer@ibp.fraunhofer.de

#### **ENERGY SYSTEMS**

Tekn. Dr. Dietrich Schmidt  
Head of Department  
Phone +49 561 804-1871  
Fax +49 561 804-3187  
dietrich.schmidt@  
ibp.fraunhofer.de

#### **HEAT TECHNOLOGY**

Dipl.-Ing. Hans Erhorn  
Head of Department  
Phone +49 711 970-3380  
Fax +49 711 970-3399  
hans.erhorn@ibp.fraunhofer.de

#### **HYGROTHERMICS**

Dr.-Ing. Hartwig Künzel  
Head of Department  
Phone +49 8024 643-245  
Fax +49 8024 643-366  
hartwig.kuenzel@  
ibp.fraunhofer.de

#### **INDOOR CLIMATE**

Dr.-Ing. Gunnar Grün  
Head of Department  
Phone +49 8024 643-228  
Fax +49 8024 643-366  
gunnar.gruen@ibp.fraunhofer.de

#### **LIFE CYCLE ENGINEERING**

Dipl.-Ing. Matthias Fischer  
Head of Department  
Phone +49 711 970-3155  
Fax +49 711 970-3190  
matthias.fischer@  
ibp.fraunhofer.de



## **INSTITUTE STUTTGART**

P.O. Box 80 04 69  
70504 Stuttgart, Germany  
Nobelstrasse 12  
70569 Stuttgart, Germany  
Phone +49 711 970-00  
Fax +49 711 970-3395  
info@ibp.fraunhofer.de

© Fraunhofer IBP 2015

---

### **HOLZKIRCHEN BRANCH**

P.O. Box 11 52  
83601 Holzkirchen, Germany  
Fraunhoferstrasse 10  
83626 Valley, Germany  
Phone +49 8024 643-0  
Fax +49 8024 643-366

### **KASSEL BRANCH**

Gottschalkstrasse 28a  
34127 Kassel, Germany  
Phone +49 561 804-1870  
Fax +49 561 804-3187

### **NÜRNBERG BRANCH**

c/o Energie Campus  
Nürnberg  
Fürther Strasse 250  
Auf AEG, Bau 16  
90429 Nürnberg, Germany  
Phone +49 911 56854-9144

### **ROSENHEIM BRANCH**

Fraunhofer Center Building  
Technology  
c/o Hochschule Rosenheim  
Hochschulstrasse 1  
83024 Rosenheim, Germany  
Phone +49 8031 805-2684